



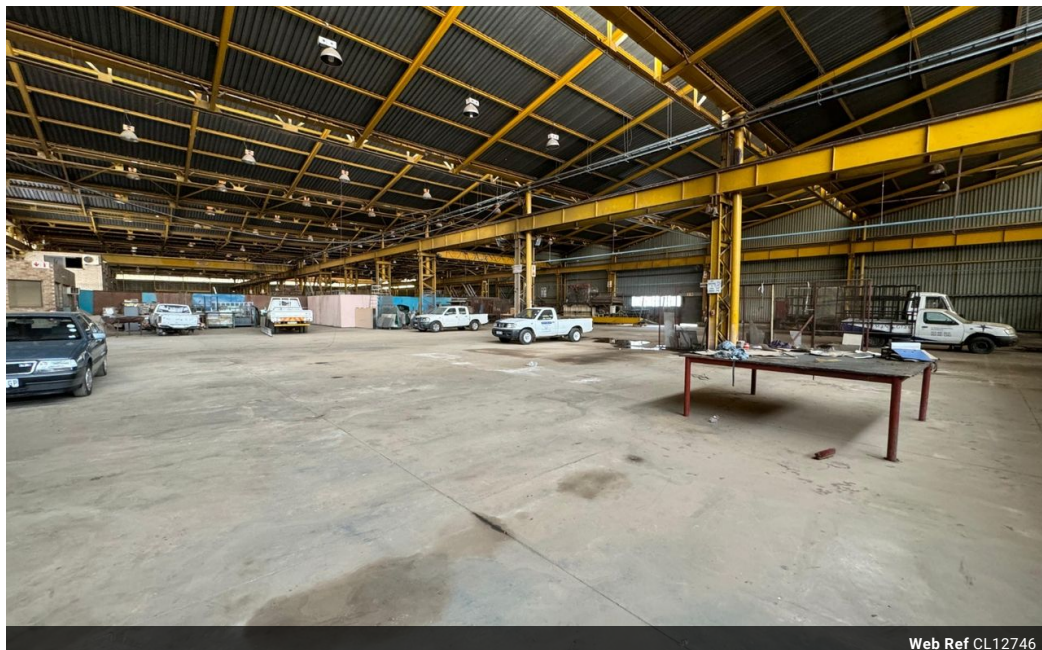
Ryan Van Rensburg
0846482022
ryan@newpointproperty.co.za

Contact Head Office

010 0354431

Office 40A
Eden Meadows Complex
1 Van Riebeeck Avenue
Greenstone
1609

2,000m² Warehouse To Let in Stormill



Web Ref CL12746



R50,000 pm

Gross Monthly Rental R50,000 Excl. VAT



0



0

Affordable 2,000m² Storage Warehouse in Stormill – R25/sqm

This 2,000m² warehouse, situated in the prime industrial hub of Stormill, offers an excellent storage solution at a highly competitive rental rate of just R25 per sqm. Designed exclusively for warehousing and storage operations, the facility features an expansive open-plan layout, allowing for maximum efficiency and flexibility. The property is well-maintained and secured, providing peace of mind for businesses looking to optimize their logistics and storage capacity.

Strategically located with easy access to major transport routes, this warehouse is ideal for local and regional distribution. High ceilings and a robust structure ensure ample storage capacity, making it a cost-effective choice for businesses needing reliable

Features

Zoning Industrial

Interior

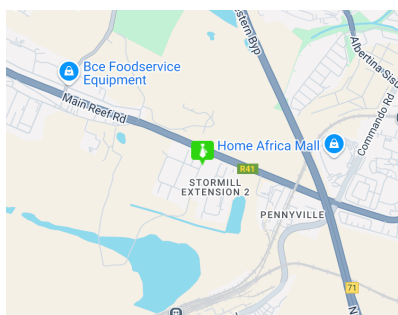
Power 3 Phase Yes

Exterior

Security Yes

Sizes

Floor Size 2,000m²



<https://www.newpointproperty.co.za>