



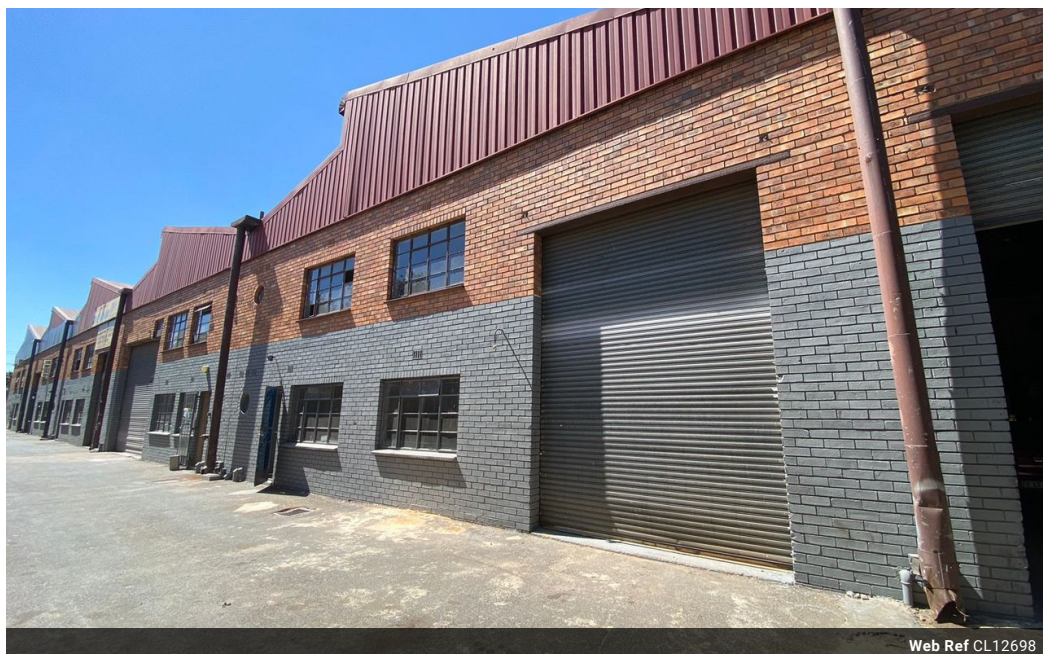
Ryan Van Rensburg  
0846482022  
ryan@newpointproperty.co.za

Contact Head Office

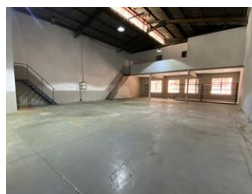
010 0354431

Office 40A  
Eden Meadows Complex  
1 Van Riebeeck Avenue  
Greenstone  
1609

400m<sup>2</sup> Warehouse To Let in Stormill



Web Ref CL12698



R18,000 pm

Gross Monthly Rental R18,000 Excl. VAT



0



0

## Refurbished 400m<sup>2</sup> Industrial Unit in Stormill – Secure & Versatile

This newly refurbished 400m<sup>2</sup> industrial unit in Stormill offers a modern and efficient workspace, perfect for a variety of industrial and commercial operations. Featuring a high roller shutter door for seamless access, a robust three-phase power supply, and a spacious open-plan layout, this unit is designed to maximize productivity and flexibility for your business needs.

A stylish second-floor office area provides a bright and professional space for administrative functions, while multiple bathrooms and showers ensure a comfortable environment for staff. Located within a secure industrial park with controlled access, this

## Features

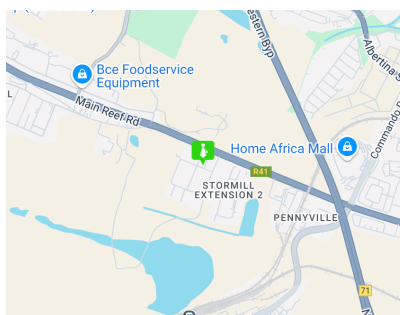
**Zoning** Industrial

### Interior

Power 3 Phase Yes

### Sizes

Floor Size 400m<sup>2</sup>  
Building Height 5m



<https://www.newpointproperty.co.za>