



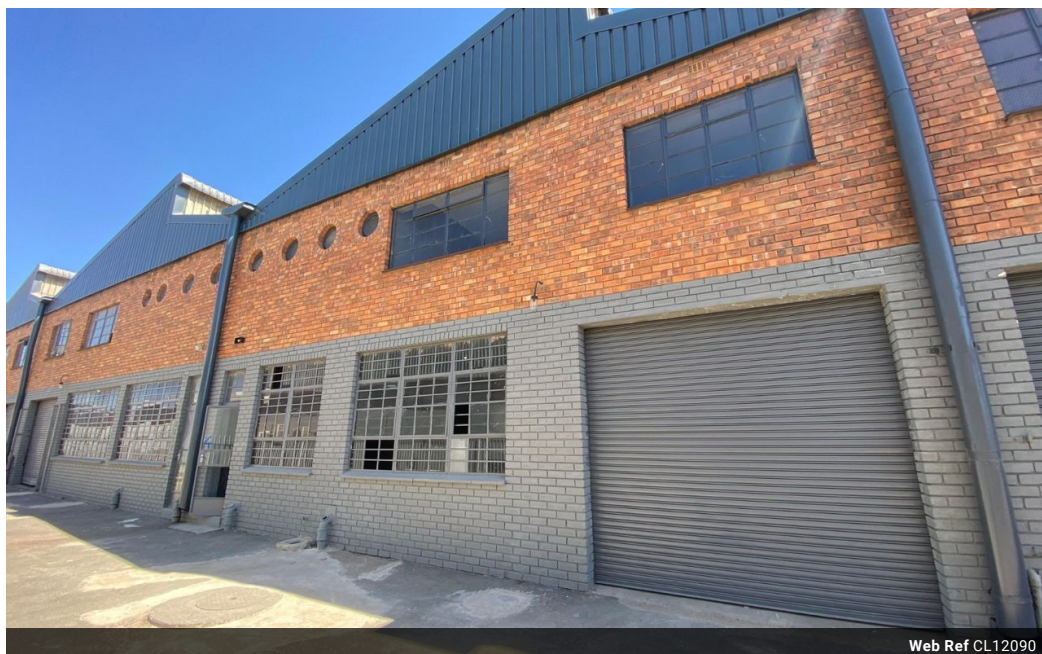
Ryan Van Rensburg
0846482022
ryan@newpointproperty.co.za

Contact Head Office

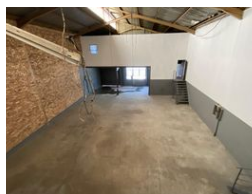
010 0354431

Office 40A
Eden Meadows Complex
1 Van Riebeeck Avenue
Greenstone
1609

400m² Warehouse To Let in Stormill



Web Ref CL12090



R18,000 pm

Gross Monthly Rental R18,000 Excl. VAT



400m² Refurbished Industrial Unit To Let in Stormill – Secure & Versatile Space

This newly refurbished 400m² industrial unit in Stormill offers a modern and efficient workspace designed to meet diverse business needs. Featuring a standard roller shutter door for easy access and a powerful three-phase electrical supply, the unit is well-suited for high-demand operations. The open-plan layout allows for flexibility, making it ideal for various industrial and commercial applications.

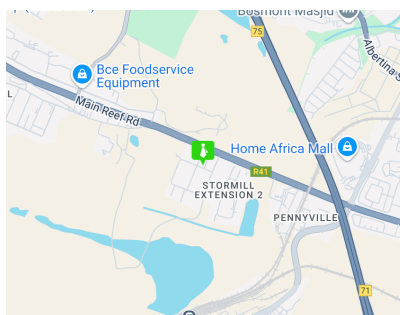
A stylish second-floor office area provides a professional environment for administrative functions, while multiple bathrooms and showers add convenience for staff. Located within a secure industrial park with controlled access, this unit offers the perfect

Features

Zoning Industrial

Interior
Power 3 Phase Yes

Sizes
Floor Size 400m²
Building Height 5m



<https://www.newpointproperty.co.za>