



**Ryan Van Rensburg**  
 0846482022  
[ryan@newpointproperty.co.za](mailto:ryan@newpointproperty.co.za)

Contact Head Office

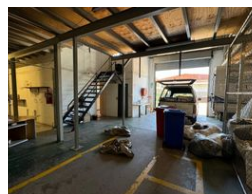
010 0354431

Office 40A  
 Eden Meadows Complex  
 1 Van Riebeeck Avenue  
 Greenstone  
 1609

800m<sup>2</sup> Warehouse To Let in Robertville



Web Ref RCL12748RW



R36,000 pm

Gross Monthly Rental R36,000 Excl. VAT

0 0

## 800m<sup>2</sup> Free-Standing Warehouse with Mezzanine & Goods Lift – Prime Access & Functionality

This well-maintained 800m<sup>2</sup> free-standing warehouse is the perfect blend of space and efficiency, designed to support smooth operations across storage, light manufacturing, or distribution. It features a spacious mezzanine level with a 2-ton goods lift, high-clearance ceilings, and an open-plan layout that maximizes flexibility and workflow.

The property includes a clean, functional office area for administrative tasks, along with well-kept staff ablutions for daily convenience. Ideally situated near key arterial routes, it offers excellent access for logistics and client visits. Secure and versatile,

## Features

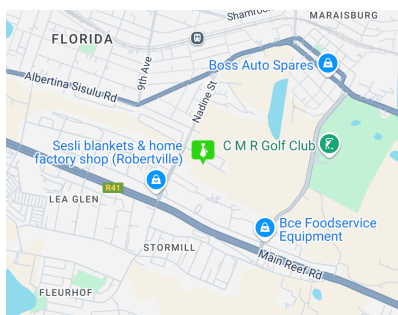
**Zoning** Industrial

### Interior

Floor Loading Cap. 1 Tn/m<sup>2</sup>  
 Power 3 Phase Yes

### Sizes

Floor Size 800m<sup>2</sup>  
 Land Size 800m<sup>2</sup>  
 Building Height 6m



<https://www.newpointproperty.co.za>