



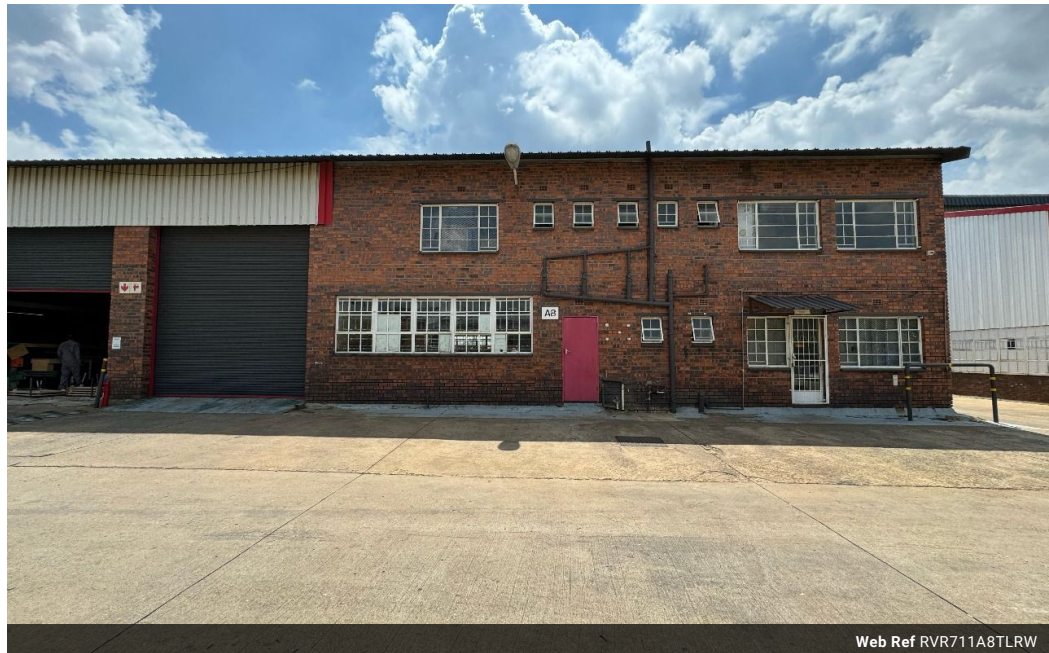
Ryan Van Rensburg
0846482022
ryan@newpointproperty.co.za

Contact Head Office

010 0354431

Office 40A
Eden Meadows Complex
1 Van Riebeeck Avenue
Greenstone
1609

711m² Warehouse To Let in Robertville



Web Ref RVR711A8TLRW



R35,526 pm

Gross Monthly Rental R35,526 Excl. VAT



Secure 711m² Warehouse with Power, Offices, and Easy Access

Position your business in this 711m² warehouse, located in a secure, access-controlled park with 24/7 access. Designed for efficient operations, the warehouse features high ceilings for maximum storage, a large roller shutter door for smooth loading, and reliable three-phase power to support a range of industrial or commercial activities.

The property also includes multi-floor office spaces to accommodate your administrative needs, along with on-site bathrooms and showers for added staff convenience. Offering a functional, secure, and well-connected environment, this warehouse is ideal for

Features

Zoning Industrial

Interior

Floor Loading Cap. 1 Tn/m²
Power 3 Phase Yes

Exterior

Security Yes

Sizes

Floor Size 711m²
Land Size 711m²
Building Height 8m

