



Ryan Van Rensburg
0846482022
ryan@newpointproperty.co.za

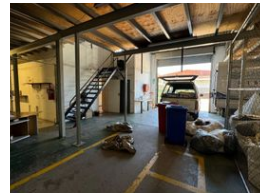
Contact Head Office
010 0354431

Office 40A
Eden Meadows Complex
1 Van Riebeeck Avenue
Greenstone
1609

800m² Warehouse To Let in Robertville



Web Ref RCL12748



R36,000 pm

Gross Monthly Rental R36,000 Excl. VAT

0 0

Free-Standing 800m² Warehouse with Goods Lift & Great Access

This well-maintained 800m² free-standing warehouse offers the ideal balance of functionality and space, tailored for businesses seeking efficient logistics and smooth daily operations. With a spacious mezzanine level supported by a 2-ton goods lift, high-clearance ceilings, and an open-plan layout, the facility is perfect for storage, light manufacturing, or distribution.

The warehouse is complemented by a neat office area suited for admin functions, along with clean staff ablutions for everyday convenience. Located close to main arterial routes, this property ensures excellent accessibility for deliveries and client visits alike.

Features

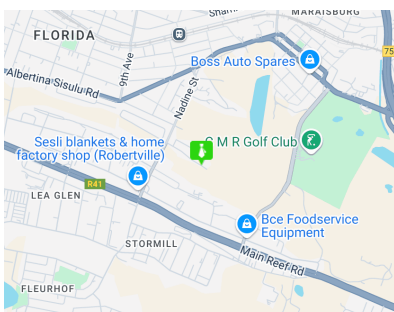
Zoning Industrial

Interior

Floor Loading Cap. 1 Tn/m²
Power 3 Phase Yes

Sizes

Floor Size 800m²
Land Size 800m²
Building Height 6m



<https://www.newpointproperty.co.za>