



Ryan Van Rensburg
0846482022
ryan@newpointproperty.co.za

Contact Head Office

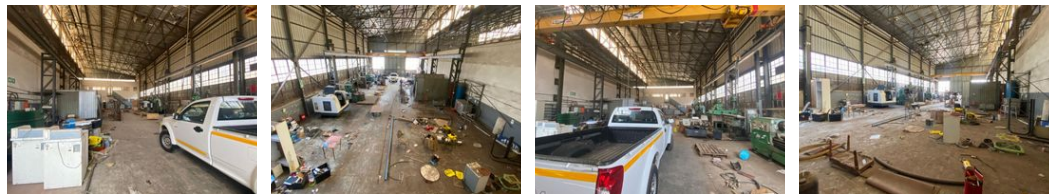
010 0354431

Office 40A
Eden Meadows Complex
1 Van Riebeeck Avenue
Greenstone
1609

612m² Warehouse To Let in Lea Glen



Web Ref RVR612RTL



R24,480 pm

Gross Monthly Rental R24,480 Excl. VAT

0 0

612sqm Warehouse TO LET in Lea Glen

612sqm warehouse offers an exceptional industrial solution, ideally suited for businesses requiring ample space, power, and accessibility. Located in a secure, well-managed industrial park, this unit stands out with its extremely good internal height, making it ideal for high-stacking, storage, or operations involving large machinery or equipment.

The warehouse is equipped with 250 amps of three-phase power, with the option to upgrade should your operational requirements grow. A large roller shutter door allows for seamless access for trucks and deliveries, supporting efficient logistics and workflow.

Two undercover parking bays are included, providing sheltered access for staff or key personnel, with additional open parking

Features

Zoning Industrial

Interior

Floor Loading Cap.	1 Tn/m ²
Power 3 Phase	Yes
Power Amps	250

Sizes

Floor Size	612m ²
Land Size	612m ²
Building Height	7m

