



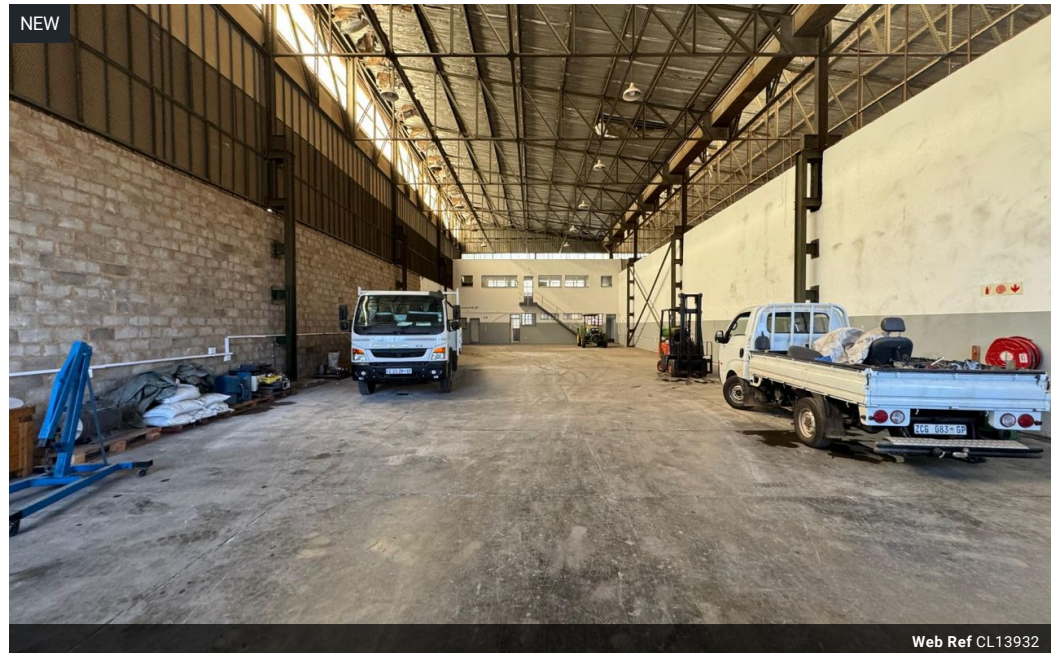
Ryan Van Rensburg
 0846482022
ryan@newpointproperty.co.za

Contact Head Office

010 0354431

Office 40A
 Eden Meadows Complex
 1 Van Riebeeck Avenue
 Greenstone
 1609

656m² Warehouse To Let in Lea Glen



Web Ref CL13932



R29,520 pm

Gross Monthly Rental R29,520 Excl. VAT

0 0

656m² Industrial Unit To Let | Secure & Functional Space Ready for Immediate Occupation

Available immediately, this well-maintained 656m² industrial unit is ideal for businesses needing efficient workspace with excellent access and security. Situated in a secure industrial park, the unit offers smooth logistics for truck and container deliveries.

It features great internal height, a high-clearance roller door, and three-phase power—perfect for manufacturing or warehousing. The double-storey office component includes separate ablution facilities, making this a practical solution for both admin and

Features

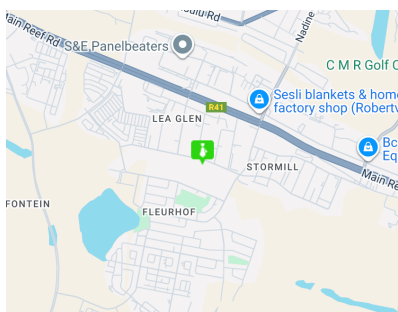
Zoning Industrial

Interior

Floor Loading Cap. 1 Tn/m²
 Power 3 Phase Yes

Sizes

Floor Size 656m²
 Land Size 656m²
 Building Height 8m



<https://www.newpointproperty.co.za>