



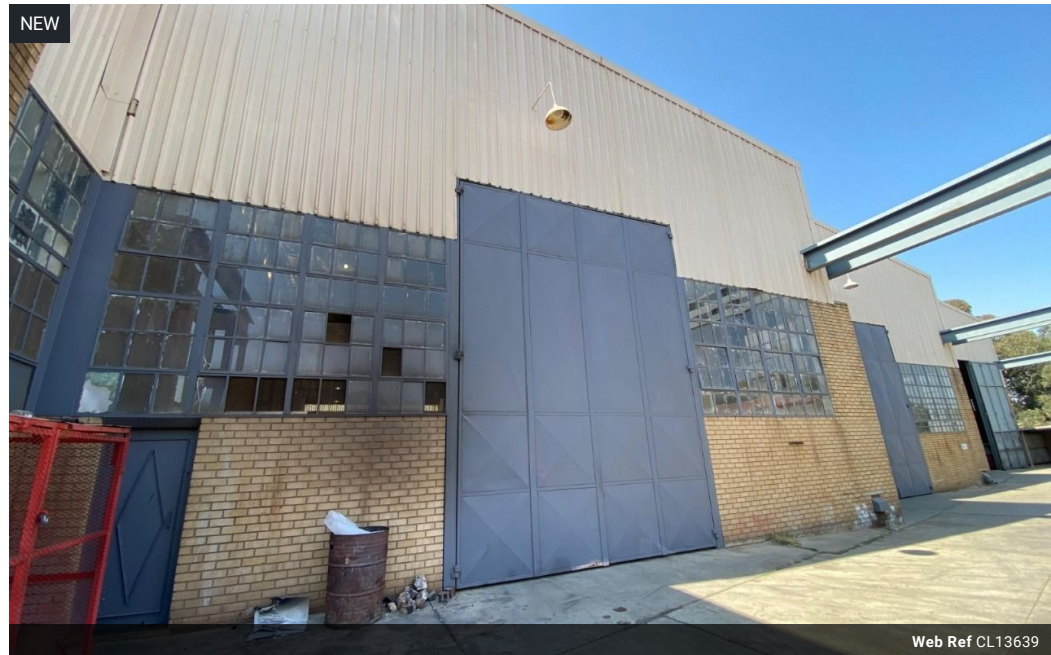
**Ryan Van Rensburg**  
 0846482022  
[ryan@newpointproperty.co.za](mailto:ryan@newpointproperty.co.za)

Contact Head Office

010 0354431

Office 40A  
 Eden Meadows Complex  
 1 Van Riebeeck Avenue  
 Greenstone  
 1609

700m<sup>2</sup> Warehouse To Let in Lea Glen



R33,000 pm

Gross Monthly Rental R33,000 Excl. VAT

0 0

## Premium 700m<sup>2</sup> Industrial Unit in Lea Glen – High Volume, High Efficiency

Set your business up for success in this exceptional 700m<sup>2</sup> industrial unit within the sought-after Lea Glen business park. Featuring a towering 10-meter-high structure, the space is perfectly suited for vertical storage, warehousing, manufacturing, or logistics. A large roller shutter door ensures seamless loading, while the three-phase power supply easily supports heavy machinery and equipment.

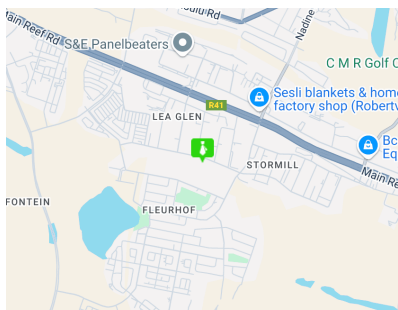
At the rear of the property, a sleek multi-level office component offers a modern and professional workspace for administrative teams. Built with both performance and practicality in mind, this unit delivers the ideal blend of operational efficiency and office

## Features

**Zoning** Industrial

**Interior**  
 Power 3 Phase Yes

**Sizes**  
 Floor Size 700m<sup>2</sup>  
 Building Height 10m



<https://www.newpointproperty.co.za>