



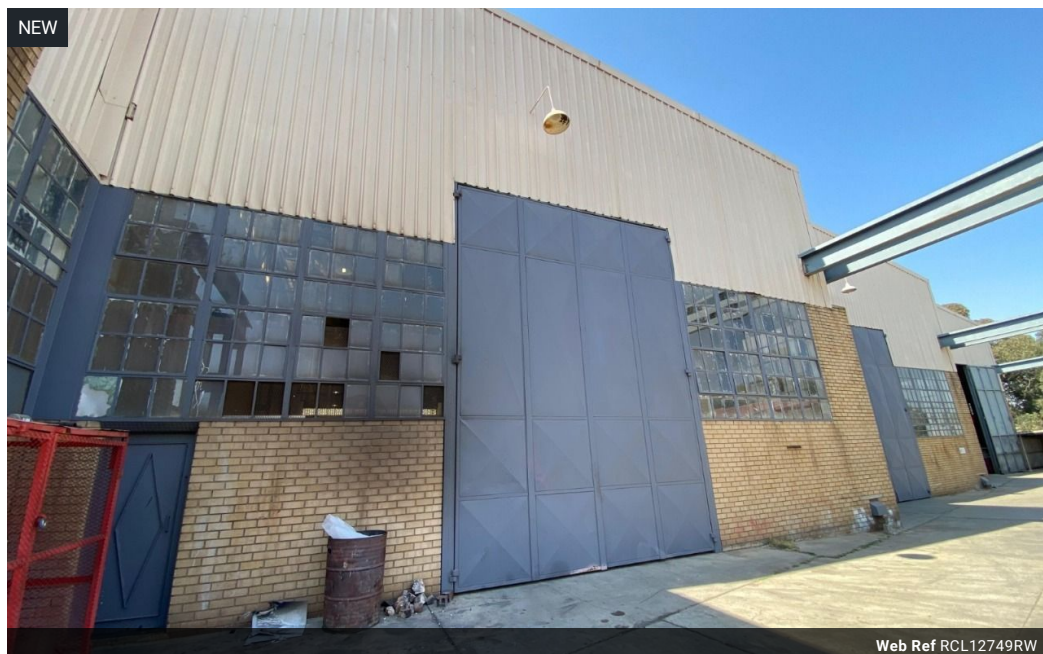
**Ryan Van Rensburg**  
0846482022  
ryan@newpointproperty.co.za

Contact Head Office

010 0354431

Office 40A  
Eden Meadows Complex  
1 Van Riebeeck Avenue  
Greenstone  
1609

700m<sup>2</sup> Warehouse To Let in Lea Glen



R33,000 pm

Gross Monthly Rental R33,000 Excl. VAT

0 0

## High-Spec 700m<sup>2</sup> Industrial Unit in Lea Glen – 10m Height, Power & Prime Functionality

Position your business for success in this exceptional 700m<sup>2</sup> industrial unit located in the popular Lea Glen business park. Designed for optimal efficiency, it boasts a soaring 10-meter-high structure, ideal for vertical storage and smooth operational flow. A large roller shutter door enables effortless loading, while a robust three-phase power supply supports heavy-duty machinery—perfect for warehousing, manufacturing, or logistics.

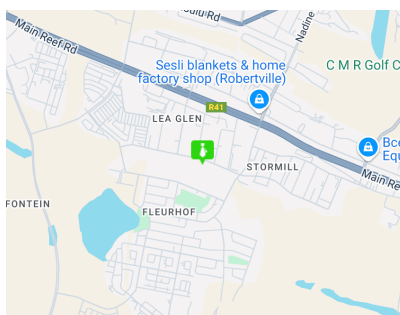
At the rear, a modern multi-level office component provides a professional and comfortable environment for administration and management teams. Thoughtfully built to support industrial operations with efficiency and ease, this property combines

## Features

**Zoning** Industrial

**Interior**  
Power 3 Phase Yes

**Sizes**  
Floor Size 700m<sup>2</sup>  
Building Height 10m



<https://www.newpointproperty.co.za>