

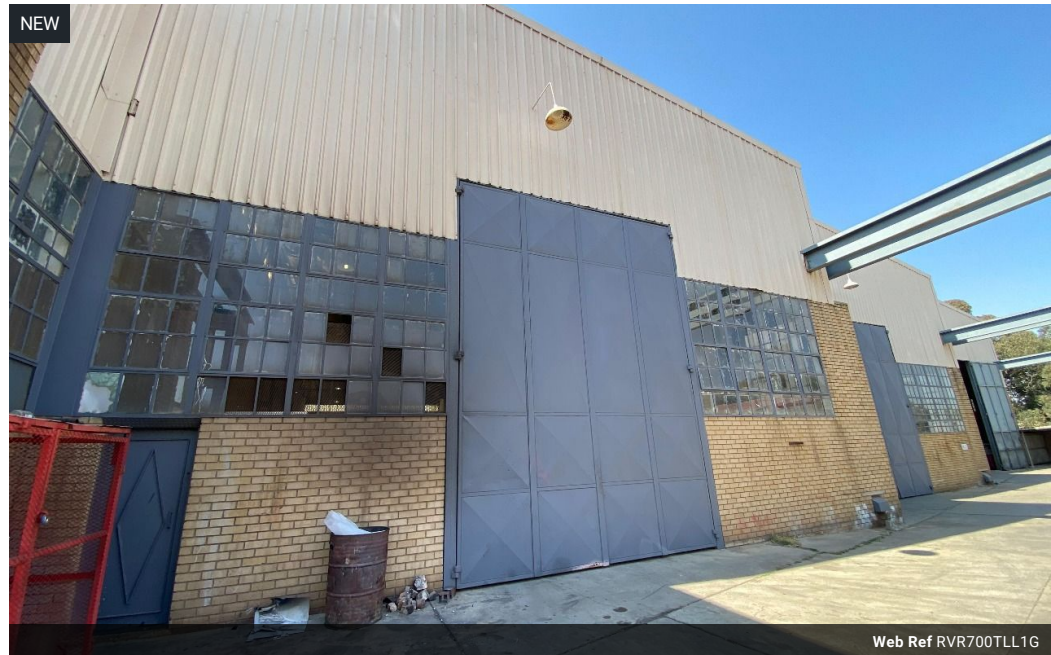


**Ryan Van Rensburg**  
 0846482022  
[ryan@newpointproperty.co.za](mailto:ryan@newpointproperty.co.za)

Contact Head Office  
 010 0354431

Office 40A  
 Eden Meadows Complex  
 1 Van Riebeeck Avenue  
 Greenstone  
 1609

## 700m² Warehouse To Let in Lea Glen



**R33,000 pm**

**Gross Monthly Rental** R33,000 Excl. VAT

0 0

### Expansive 700m² Unit in Prime Lea Glen Business Park with 10m Height & Offices

Positioned in the sought-after Lea Glen Business Park, this 700m² unit offers exceptional height and functionality for businesses in need of spacious, secure, and efficient industrial space. The impressive 10-meter-high building provides generous vertical clearance—perfect for racking, storage, or accommodating large machinery—while a wide roller shutter door ensures seamless access for deliveries and equipment.

Equipped with reliable three-phase power, the warehouse is ideal for a variety of light to heavy-duty industrial operations. At the rear of the unit, a multi-floor office component provides a professional space for admin, meetings, and staff facilities. Whether you're scaling up or streamlining your business, this well-balanced property offers the space, accessibility, and infrastructure you

### Features

**Zoning** Industrial

#### Interior

Floor Loading Cap. 1 Tn/m²  
 Power 3 Phase Yes

#### Sizes

Floor Size 700m²  
 Building Height 10m

