



Ethan Willett
0844752021
ethan.w@newpointproperty.co.za

Contact Head Office

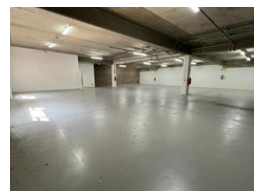
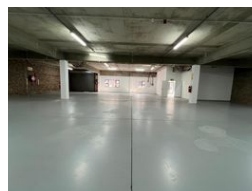
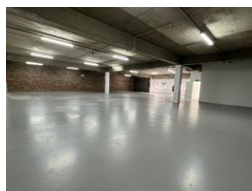
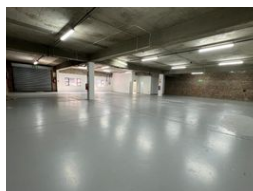
010 0354431

Office 40A
Eden Meadows Complex
1 Van Riebeeck Avenue
Greenstone
1609

441m² Warehouse To Let in Laser Park



Web Ref CL14158



R33,075 pm

Gross Monthly Rental R33,075 Excl. VAT
Monthly Rates R1 Excl. VAT

Monthly Levy R1 Excl. VAT



0



6

441m² Warehouse to Let in Laserpark, Roodepoort – R33,075 p/m (excl. VAT)

This well-maintained warehouse is available immediately in the secure Laserpark Business Park, just off Beyers Naude Drive. The unit features an on-grade roller shutter door, 4m roof height, and 3-phase power—ideal for storage, light industrial operations, or distribution. With 24-hour security and controlled access, your business will enjoy both safety and functionality.

The property includes a neat reception area, two bathrooms (one with a shower), and a compact kitchenette for daily convenience. Its strategic location ensures excellent access to main routes, making it a practical and accessible choice for businesses in

Features

Zoning Industrial

Interior

Floor Loading Cap. 2 Tn/m²
Power 3 Phase Yes
Power Amps 100

Exterior

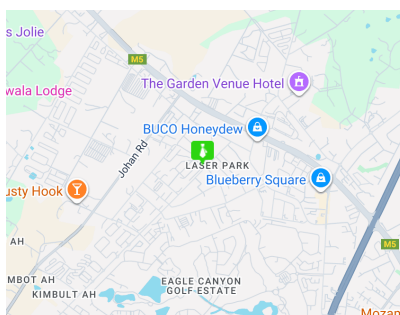
Security Yes
Open Parking Bays 6

Sizes

Floor Size 441m²

Extras

24 Hour Access 24 Hour Response Fibre



<https://www.newpointproperty.co.za>