



Ethan Willett
0844752021
ethan.w@newpointproperty.co.za

Contact Head Office

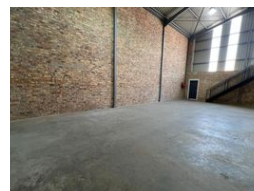
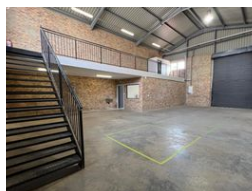
010 0354431

Office 40A
Eden Meadows Complex
1 Van Riebeeck Avenue
Greenstone
1609

191m² Warehouse To Let in Laser Park



Web Ref CL14142



R16,235 pm

Gross Monthly Rental R16,235 Excl. VAT
Monthly Rates R1 Excl. VAT

Monthly Levy R1 Excl. VAT

 0  3

191m² Warehouse To Let in Secure Laserpark Business Park

Available immediately at R16,235 per month (excl. VAT), this well-positioned warehouse unit is located in the sought-after Laserpark area of Roodepoort. Set within a neat and secure business park offering 24-hour security, the property provides excellent accessibility for logistics and transport, making it ideal for light industrial, storage, or distribution operations.

The unit features a spacious concrete mezzanine, neat reception, and two bathrooms, along with 60 amps of 3-phase power for industrial use. With an on-grade roller shutter door, excellent roof height, and back-up power, it delivers the functionality and reliability needed for uninterrupted business operations. This versatile and well-maintained space offers the perfect balance of

Features

Zoning Industrial

Interior

Floor Loading Cap. 2 Tn/m²
Power 3 Phase Yes
Power Amps 60

Exterior

Security Yes
Open Parking Bays 3

Sizes

Floor Size 191m²

Extras

24 Hour Access 24 Hour Response Fibre

