



Ethan Willett
0844752021
ethan.w@newpointproperty.co.za

Contact Head Office

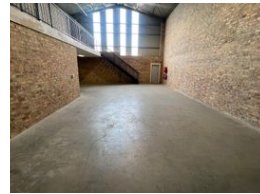
010 0354431

Office 40A
Eden Meadows Complex
1 Van Riebeeck Avenue
Greenstone
1609

191m² Warehouse To Let in Laser Park



Web Ref EW191TLLP11



R16,235 pm

Gross Monthly Rental R16,235 Excl. VAT
Monthly Rates R1 Excl. VAT

Monthly Levy R1 Excl. VAT

0 3

Industrial property to Rent in Laserpark, Roodepoort

This 191sqm industrial warehouse unit is available to rent immediately at R16,235 plus VAT, located in a clean and securely managed business park in Laserpark, Roodepoort. The park offers 24-hour on-site security, ensuring a safe working environment around the clock. The unit is well-equipped with an on-grade roller shutter door for efficient loading, impressive warehouse roof height, and a neat, open floor space that supports a wide range of industrial or storage needs. For added convenience and operational continuity, back-up power is available at an additional R1,000 per month.

Inside, the unit features a modern concrete mezzanine level, providing additional usable space ideal for storage or light office use.

Features

Zoning Industrial

Interior

Floor Loading Cap. 2 Tn/m²
Power 3 Phase Yes
Power Amps 60

Exterior

Security Yes
Open Parking Bays 3

Sizes

Floor Size 191m²

Extras

24 Hour Access 24 Hour Response

