



Ethan Willett
0844752021
ethan.w@newpointproperty.co.za

Contact Head Office

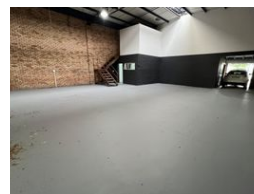
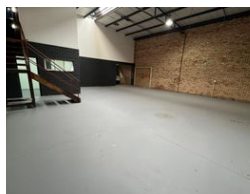
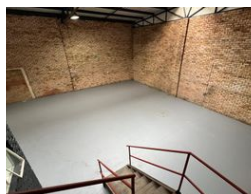
010 0354431

Office 40A
Eden Meadows Complex
1 Van Riebeeck Avenue
Greenstone
1609

320m² Warehouse To Let in Laser Park



Web Ref 10EWLPTL320



R23,000 pm

Gross Monthly Rental R23,000 Excl. VAT
Monthly Rates R1 Excl. VAT

Monthly Levy R1 Excl. VAT

0 5

Industrial property to Rent in Laserpark, Roodepoort

This 320sqm industrial warehouse unit is now available to rent immediately at R23,000 per month (excluding VAT). Ideally located in a well-maintained and securely gated business park in Honeydew, Roodepoort, the unit offers excellent accessibility just off the busy Beyers Naude Drive. The warehouse is designed for efficient operations, featuring a spacious open-plan layout, an on-grade roller shutter door for easy loading and offloading, and impressive roof height to accommodate racking or light industrial use.

Inside, the unit includes three well-sized offices, two bathrooms, and a clean, functional kitchenette—making it suitable for a business requiring both administrative and operational space. A 3-phase power supply supports various industrial needs, while the

Features

Zoning Industrial

Interior

Floor Loading Cap. 2 Tn/m²
Power 3 Phase Yes
Power Amps 80

Exterior

Security Yes
Open Parking Bays 5

Sizes

Floor Size 320m²

Extras

24 Hour Access 24 Hour Response

