

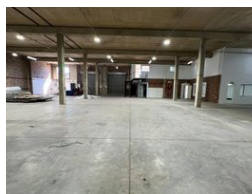


**Ethan Willett**  
0844752021  
ethan.w@newpointproperty.co.za

Contact Head Office

010 0354431

Office 40A  
Eden Meadows Complex  
1 Van Riebeeck Avenue  
Greenstone  
1609



**R70,575 pm**

**Gross Monthly Rental** R70,575 Excl. VAT  
**Monthly Rates** R1 Excl. VAT

**Monthly Levy** R1 Excl. VAT

0 6

## Industrial property to Rent in Laserpark, Roodepoort

This 941sqm industrial warehouse is available to rent immediately at R70,575 per month (excluding VAT). Located in a clean and secure business park in Laserpark, Roodepoort, the property offers 24-hour on-site security, ensuring peace of mind for tenants and staff. The warehouse is designed for efficiency and accessibility, featuring two on-grade roller shutter doors, excellent roof height for optimal vertical storage, ample open floor space, and a reliable 3-phase power supply suitable for various industrial operations.

The unit also includes a well-maintained reception area, complemented by spacious upstairs office space that includes a boardroom—ideal for administrative and client-facing functions. Additional amenities include two kitchenettes, four toilets, and a

## Features

**Zoning** Industrial

### Interior

Floor Loading Cap. 3 Tn/m<sup>2</sup>  
Air Conditioning Yes  
Power 3 Phase Yes  
Power Amps 100

### Exterior

Security Yes  
Open Parking Bays 6

### Sizes

Floor Size 941m<sup>2</sup>

### Extras

24 Hour Access 24 Hour Response Fibre

