



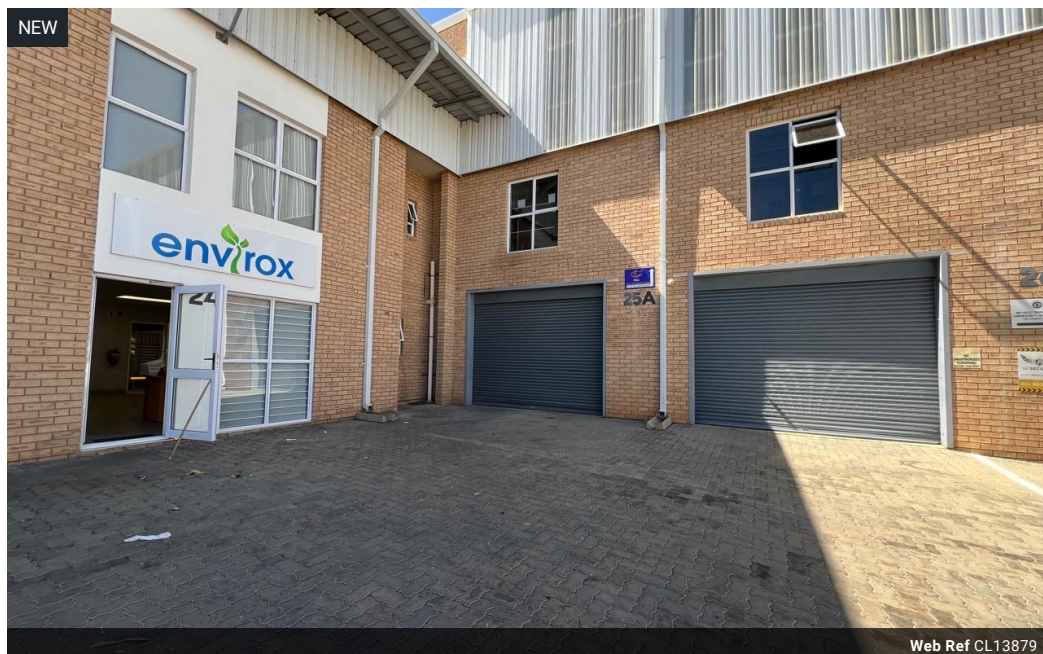
Ethan Willett
0844752021
ethan.w@newpointproperty.co.za

Contact Head Office

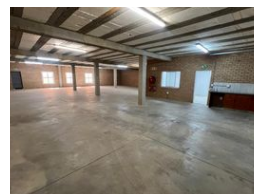
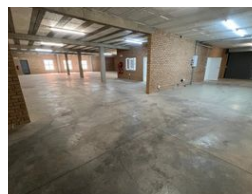
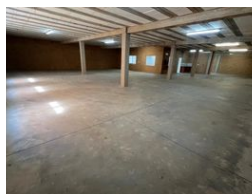
010 0354431

Office 40A
Eden Meadows Complex
1 Van Riebeeck Avenue
Greenstone
1609

464m² Warehouse To Let in Laser Park



Web Ref CL13879



R27,840 pm

Gross Monthly Rental R27,840 Excl. VAT
Monthly Rates R1 Excl. VAT

Monthly Levy R1 Excl. VAT

0 3

Secure & Functional 464m² Warehouse To Let in Laserpark, Roodepoort

Position your business in this clean, well-managed 464m² warehouse unit, ideally located just off Beyers Naudé Drive in a secure business park. Available immediately at R27,840 plus VAT, the unit offers great access for transport and deliveries with a large on-grade roller shutter door, ample floor space, and generous height, perfect for storage, logistics, or light manufacturing.

The property includes a tidy reception area, dedicated office space, staff bathrooms, and a kitchen for day-to-day comfort. A 3-phase power supply ensures seamless operation of industrial equipment. With its convenient location, practical layout, and secure

Features

Zoning Industrial

Interior

Floor Loading Cap. 2 Tn/m²
Power 3 Phase Yes
Power Amps 60

Exterior

Security Yes
Open Parking Bays 3

Sizes

Floor Size 464m²

Extras

24 Hour Access Fibre

