



Ethan Willett
0844752021
ethan.w@newpointproperty.co.za

Contact Head Office

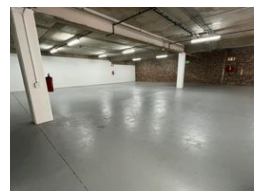
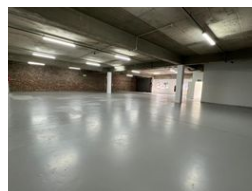
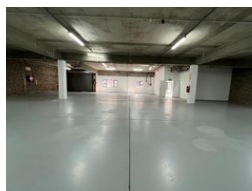
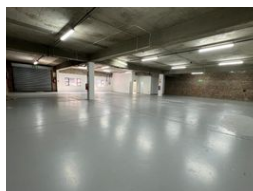
010 0354431

Office 40A
Eden Meadows Complex
1 Van Riebeeck Avenue
Greenstone
1609

441m² Warehouse To Let in Laser Park



Web Ref 441TLLPEW9



R33,075 pm

Gross Monthly Rental R33,075 Excl. VAT
Monthly Rates R1 Excl. VAT

Monthly Levy R1 Excl. VAT

0 6

Industrial property to Rent in Laserpark, Roodepoort

This 441sqm industrial warehouse unit is now available to rent immediately at R33,075 per month (excluding VAT). Strategically located just off Beyers Naude Drive in the secure and well-maintained Laserpark Business Park, Roodepoort, the unit benefits from 24-hour security and controlled access, providing peace of mind for businesses operating on-site. The warehouse boasts a unique and practical layout with an on-grade roller shutter door, allowing easy access for deliveries and dispatch. With a 4-meter-high roof, it is ideal for storage or light industrial operations, offering both functionality and flexibility.

Inside, the unit features a professional reception area that presents a clean and welcoming first impression. The warehouse is

Features

Zoning Industrial

Interior

Floor Loading Cap. 2 Tn/m²
Power 3 Phase Yes
Power Amps 100

Exterior

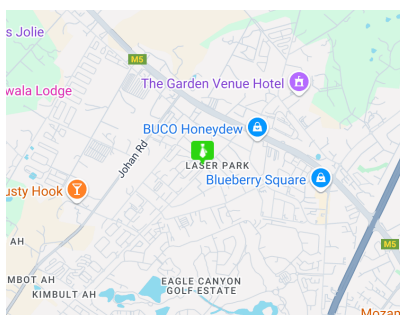
Security Yes
Open Parking Bays 6

Sizes

Floor Size 441m²

Extras

24 Hour Access 24 Hour Response Fibre



<https://www.newpointproperty.co.za>