



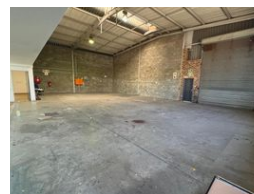
Ethan Willett
0844752021
ethan.w@newpointproperty.co.za

Contact Head Office

010 0354431

Office 40A
Eden Meadows Complex
1 Van Riebeeck Avenue
Greenstone
1609

441m² Warehouse To Let in Laser Park



R33,075 pm

Gross Monthly Rental R33,075 Excl. VAT
Monthly Rates R1 Excl. VAT

Monthly Levy R1 Excl. VAT

0 5

Industrial property to Rent in Laserpark, Roodepoort

This 441sqm industrial warehouse unit is available to rent immediately at R33,075 per month (plus VAT) and is located in a neat, securely managed business park with 24-hour security. Situated just off the main Beyers Naude Drive in Laserpark, Roodepoort, the unit offers easy access to major transport routes and surrounding industrial nodes. The warehouse is equipped with an on-grade roller shutter door, generous floor space, and excellent roof height, making it ideal for warehousing with racking systems or light manufacturing.

Inside, the unit features a well-maintained reception area and ample upstairs office space, offering a professional work environment. Additional features include a dedicated staff kitchen area, two bathrooms, and a 3-phase power supply to support

Features

Zoning Industrial

Interior

Floor Loading Cap. 2 Tn/m²
Air Conditioning Yes
Power 3 Phase Yes
Power Amps 60

Exterior

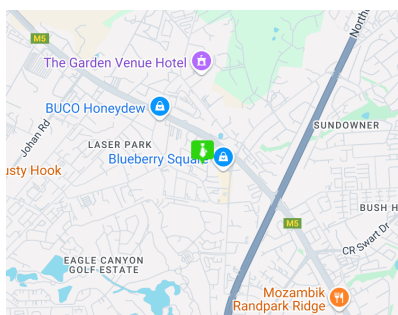
Security Yes
Open Parking Bays 5

Sizes

Floor Size 441m²

Extras

24 Hour Access 24 Hour Response Fibre



<https://www.newpointproperty.co.za>