



Ethan Willett
0844752021
ethan.w@newpointproperty.co.za

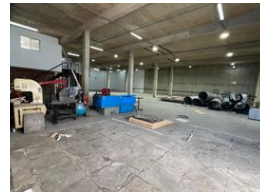
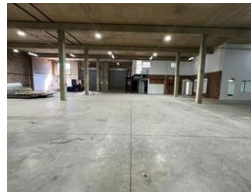
Contact Head Office

010 0354431

Office 40A
Eden Meadows Complex
1 Van Riebeeck Avenue
Greenstone
1609



Web Ref 123ATLEWLP941



R70,575 pm

Gross Monthly Rental R70,575 Excl. VAT
Monthly Rates R1 Excl. VAT

Monthly Levy R1 Excl. VAT



Industrial property to Rent in Laserpark, Roodepoort

This spacious 941sqm industrial warehouse unit is immediately available to rent at R70,575 per month (excluding VAT). The unit offers excellent functionality with two on-grade roller shutter doors, a generous roof height, and expansive floor space ideal for warehousing, manufacturing, or logistics operations. Inside, you'll find a neat reception area, two kitchenettes, four bathrooms, and ample office space — all designed to support both operational and administrative needs. The property is also equipped with a reliable 3-phase power supply, catering to businesses with heavier electrical requirements.

Situated in a well-maintained and secure business park in Laserpark, Roodepoort, the unit offers 24-hour security and controlled

Features

Zoning Industrial

Interior

Floor Loading Cap.	3 Tn/m ²
Air Conditioning	Yes
Power 3 Phase	Yes
Power Amps	100

Exterior

Security	Yes
Open Parking Bays	6

Sizes

Floor Size	941m ²
------------	-------------------

Extras

24 Hour Access 24 Hour Response Fibre

