



Ethan Willett
0844752021
ethan.w@newpointproperty.co.za

Contact Head Office

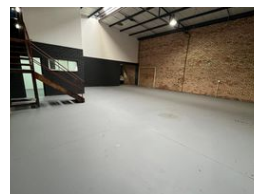
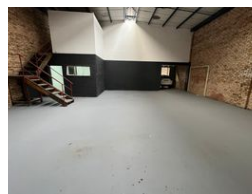
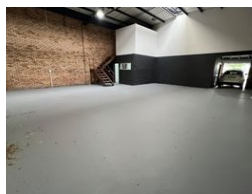
010 0354431

Office 40A
Eden Meadows Complex
1 Van Riebeeck Avenue
Greenstone
1609

320m² Warehouse To Let in Laser Park



Web Ref CL13549



R22,400 pm

Gross Monthly Rental R22,400 Excl. VAT
Monthly Rates R1 Excl. VAT

Monthly Levy R1 Excl. VAT

0 5

Affordable 320m² Warehouse in Laserpark – Ideal for Light Industrial Use

Available immediately at R22,400/month (excl. VAT), this neat and functional 320m² warehouse is perfectly positioned in Laserpark, Roodepoort—just off Beyers Naudé Drive. The unit offers excellent height, a large on-grade roller shutter door, and an open-plan layout, making it ideal for storage, distribution, or light manufacturing operations.

Inside, you'll find two partitioned offices, a kitchenette, and two bathrooms with showers, ensuring comfort and convenience for your team. The property includes a reliable three-phase power supply and secure access within a professionally managed park.

Features

Zoning Industrial

Interior

Floor Loading Cap. 2 Tn/m²
Power 3 Phase Yes
Power Amps 100

Exterior

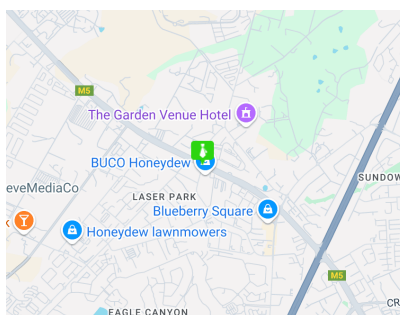
Security Yes
Open Parking Bays 5

Sizes

Floor Size 320m²

Extras

24 Hour Access 24 Hour Response



<https://www.newpointproperty.co.za>