



Ethan Willett
0844752021
ethan.w@newpointproperty.co.za

Contact Head Office

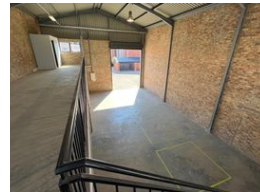
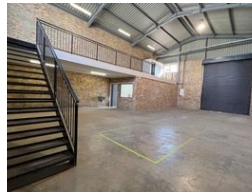
010 0354431

Office 40A
Eden Meadows Complex
1 Van Riebeeck Avenue
Greenstone
1609

191m² Warehouse To Let in Laser Park



Web Ref 191EWLPTLU8



R16,255 pm

Gross Monthly Rental R16,255 Excl. VAT
Monthly Rates R1 Excl. VAT

Monthly Levy R1 Excl. VAT



Industrial property to Rent in Laserpark, Roodepoort

This 191sqm industrial warehouse unit is available for immediate rental at R16 255 per month, excluding VAT. Located just off Beyers Naudé Drive in Laserpark, Roodepoort, the unit is positioned within a neat and securely maintained business park offering 24-hour security for peace of mind. The warehouse features an on-grade roller shutter door, excellent floor space, and generous roof height, making it ideal for a variety of light industrial or storage operations. A well-maintained reception/office area with a bathroom is situated at the front of the unit, providing a professional welcome space for clients or staff.

Additionally, the unit includes a large fixed mezzanine level, which adds valuable usable space and includes a second bathroom for

Features

Zoning Industrial

Interior

Floor Loading Cap. 2 Tn/m²
Power 3 Phase Yes
Power Amps 60

Exterior

Security Yes
Open Parking Bays 3

Sizes

Floor Size 191m²

Extras

24 Hour Response 24 Hour Access Fibre

