



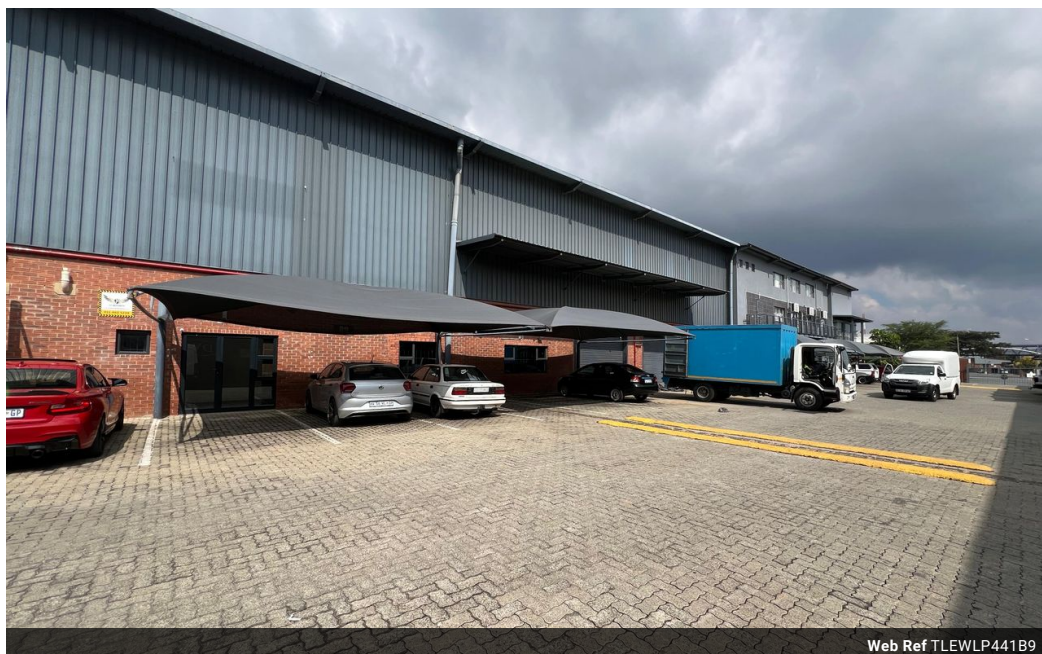
Ethan Willett
0844752021
ethan.w@newpointproperty.co.za

Contact Head Office

010 0354431

Office 40A
Eden Meadows Complex
1 Van Riebeeck Avenue
Greenstone
1609

441m² Warehouse To Let in Laser Park



Web Ref TLEWLP441B9



R33,075 pm

Gross Monthly Rental R33,075 Excl. VAT
Monthly Rates R1 Excl. VAT

Monthly Levy R1 Excl. VAT



0



5

Industrial property to Rent in Laserpark, Roodepoort

This 441sqm industrial warehouse unit is now available to rent immediately at R33 075 plus VAT. Situated in a neat and securely gated business park in Laserpark, Roodepoort, the property offers excellent visibility and accessibility just off Beyers Naudé Drive. The unit features a clean and professional reception/office area at the front, ideal for administrative functions or client-facing interactions. The premises also include two bathrooms and a convenient shower facility, making it practical for both staff comfort and operational needs.

The warehouse boasts generous floor space with a high roof clearance, providing flexibility for storage, manufacturing, or distribution operations. Access is streamlined with an on-grade roller shutter door, ensuring smooth loading and unloading.

Features

Zoning Industrial

Interior

Floor Loading Cap. 2 Tn/m²
Power 3 Phase Yes
Power Amps 60

Exterior

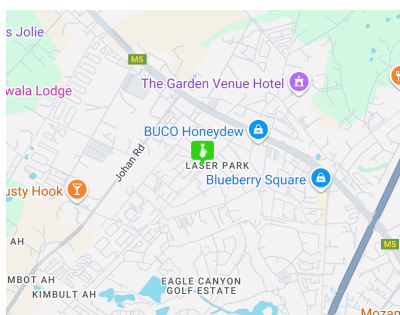
Security Yes
Open Parking Bays 5

Sizes

Floor Size 441m²

Extras

24 Hour Access 24 Hour Response Fibre



<https://www.newpointproperty.co.za>