



Ethan Willett
0844752021
ethan.w@newpointproperty.co.za

Contact Head Office

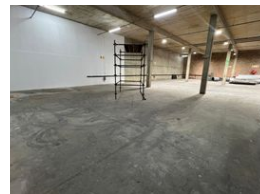
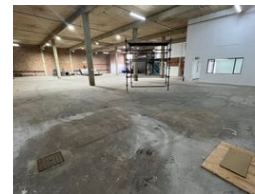
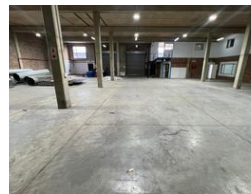
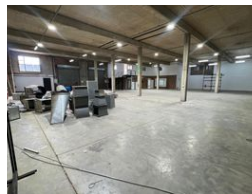
010 0354431

Office 40A
Eden Meadows Complex
1 Van Riebeeck Avenue
Greenstone
1609

941m² Warehouse To Let in Laser Park



Web Ref 941EWLPTL123



R70,500 pm

Gross Monthly Rental R70,500 Excl. VAT
Monthly Rates R1 Excl. VAT

Monthly Levy R1 Excl. VAT

0 7

Industrial property to Rent in Laserpark, Roodepoort

This spacious 941sqm industrial warehouse unit is available to rent immediately at R70 500 plus VAT and is located within a well-maintained, securely gated business park in Laserpark, Roodepoort. Ideally positioned just off the main road Beyers Naude Drive, the unit offers excellent access for logistics and transport operations. The warehouse is equipped with two on-grade roller shutter doors, providing convenient entry for trucks and deliveries, as well as generous floor space and impressive roof height, ideal for storage, manufacturing, or distribution activities.

Inside, the property features a professional and tidy reception area, along with ample office space located upstairs to support daily

Features

Zoning Industrial

Interior

| | |
|--------------------|---------------------|
| Floor Loading Cap. | 3 Tn/m ² |
| Air Conditioning | Yes |
| Power 3 Phase | Yes |
| Power Amps | 100 |

Exterior

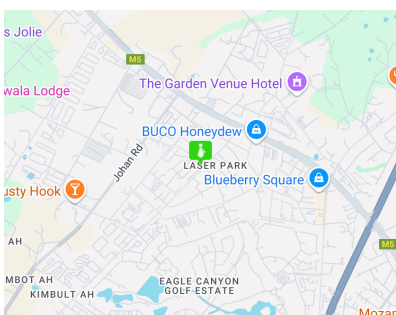
| | |
|-------------------|-----|
| Security | Yes |
| Open Parking Bays | 7 |

Sizes

| | |
|------------|-------------------|
| Floor Size | 941m ² |
|------------|-------------------|

Extras

24 Hour Access 24 Hour Response Fibre



<https://www.newpointproperty.co.za>