



Ethan Willett

0844752021

ethan.w@newpointproperty.co.za

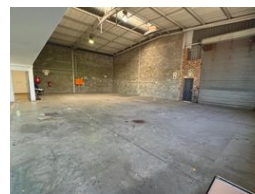
Contact Head Office

010 0354431

Office 40A
Eden Meadows Complex
1 Van Riebeeck Avenue
Greenstone
1609



Web Ref 441EWTL13



R33,075 pm

Gross Monthly Rental R33,075 Excl. VAT

Monthly Rates R1 Excl. VAT



Industrial property to Rent in Laserpark, Roodepoort

This 441sqm industrial warehouse unit is available to rent immediately at R33 075 plus VAT. Located in a well-maintained and secure business park in Laserpark, Roodepoort, the property offers excellent accessibility just off Beyers Naude Drive. The warehouse features a spacious on-grade roller shutter door for easy loading and offloading, a generous internal roof height ideal for storage or light manufacturing, and a solid concrete floor built to handle industrial use.

Upstairs, the unit offers ample office space to accommodate administrative functions, supported by two bathrooms and a kitchenette for staff convenience. Additionally, the unit is equipped with a reliable 3-phase power supply, catering to a variety of

Features

Zoning Industrial

Interior

Floor Loading Cap.	2 Tn/m ²
Air Conditioning	Yes
Power 3 Phase	Yes
Power Amps	100

Exterior

Security	Yes
Open Parking Bays	6

Sizes

Floor Size	441m ²
------------	-------------------

Extras

24 Hour Access 24 Hour Response Fibre

