



Ethan Willett  
0844752021  
ethan.w@newpointproperty.co.za

Contact Head Office

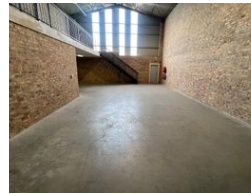
010 0354431

Office 40A  
Eden Meadows Complex  
1 Van Riebeeck Avenue  
Greenstone  
1609

191m<sup>2</sup> Warehouse To Let in Laser Park



Web Ref EWTLLP191U11



R16,255 pm

**Gross Monthly Rental** R16,255 Excl. VAT  
**Monthly Rates** R1 Excl. VAT

**Monthly Levy** R1 Excl. VAT



## Industrial property to Rent in Laserpark, Roodepoort

This 191sqm industrial warehouse unit is immediately available to rent at R16,255 per month (plus VAT), with an additional R1,000 fee for backup power, ensuring uninterrupted operations. Situated in a clean and securely gated business park just off the main Beyers Naude Drive in Laserpark, Roodepoort, this unit offers excellent accessibility and visibility for businesses. It features an on-grade roller shutter door for efficient loading and unloading, generous internal height for storage or racking, and a solid concrete slab mezzanine that adds valuable additional workspace or storage capacity.

The interior layout includes a neat office/reception area, ideal for administrative use or client interaction, along with two bathrooms

## Features

**Zoning** Industrial

### Interior

Floor Loading Cap. 2 Tn/m<sup>2</sup>  
Power 3 Phase Yes  
Power Amps 60

### Exterior

Security Yes  
Open Parking Bays 3

### Sizes

Floor Size 191m<sup>2</sup>

### Extras

24 Hour Access 24 Hour Response Fibre

