



Ethan Willett
0844752021
ethan.w@newpointproperty.co.za

Contact Head Office

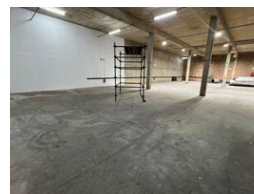
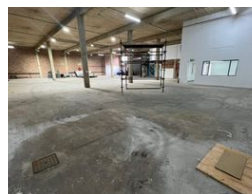
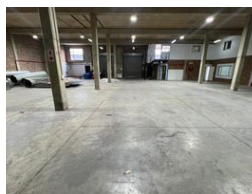
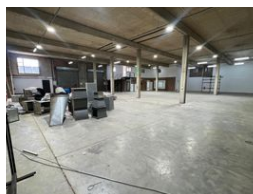
010 0354431

Office 40A
Eden Meadows Complex
1 Van Riebeeck Avenue
Greenstone
1609

941m² Warehouse To Let in Laser Park



Web Ref EW941TLPL123



R70,575 pm

Gross Monthly Rental R70,575 Excl. VAT Monthly Rates R1 Excl. VAT

0 8

Industrial Warehouse to Rent in Laserpark, Roodepoort

This spacious 941sqm industrial warehouse unit is available to rent immediately in a clean and securely managed business park in Laserpark, Roodepoort. Priced at R70,575 per month (plus VAT), the unit is well-suited for businesses requiring a combination of warehousing and office functionality. It boasts two tall on-grade roller shutter doors for smooth access and logistics, a generous warehouse floor area with excellent roof height for storage or light industrial use, and a reliable 3-phase power supply to support operational needs.

Inside, the unit offers a professional and functional office setup, featuring a neat reception area, ample office rooms, and a dedicated boardroom—ideal for team collaboration and client meetings. Additional amenities include four bathrooms and two

Features

Zoning Industrial

Interior

Floor Loading Cap. 3 Tn/m²
Air Conditioning Yes
Power 3 Phase Yes
Power Amps 100

Exterior

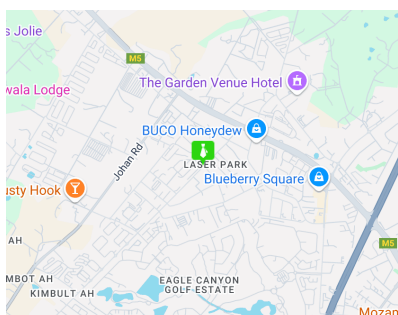
Security Yes
Open Parking Bays 8

Sizes

Floor Size 941m²

Extras

24 Hour Access 24 Hour Response Fibre



<https://www.newpointproperty.co.za>