



Ethan Willett
0844752021
ethan.w@newpointproperty.co.za

Contact Head Office

010 0354431

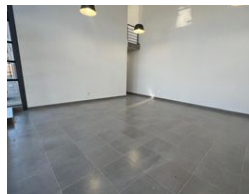
Office 40A
Eden Meadows Complex
1 Van Riebeeck Avenue
Greenstone
1609

902m² Warehouse To Let in Laser Park

NEW



Web Ref EWLPTL902F2



R67,650 pm

Gross Monthly Rental R67,650 Excl. VAT
Monthly Rates R1 Excl. VAT

Monthly Levy R1 Excl. VAT



0



10

Industrial property to Rent in Laserpark, Roodepoort

This newly built 902sqm industrial warehouse unit is available immediately to rent at R67,650 plus VAT. Situated in a secure and well-maintained business park in Laserpark, Roodepoort, the property offers a modern and practical layout ideal for a variety of industrial operations. The warehouse features excellent roof height, a spacious open floor area, and two roller shutter doors to accommodate efficient loading and offloading. It also comes equipped with 150 amps of 3-phase power, making it suitable for businesses with higher electrical demands.

Inside, the unit offers a professional reception area and two large open-plan offices, providing ample administrative and managerial space. Additional features include two bathrooms, a kitchenette, and easy truck access within the park. The

Features

Zoning Industrial

Interior

Floor Loading Cap. 3 Tn/m²
Power 3 Phase Yes
Power Amps 150

Exterior

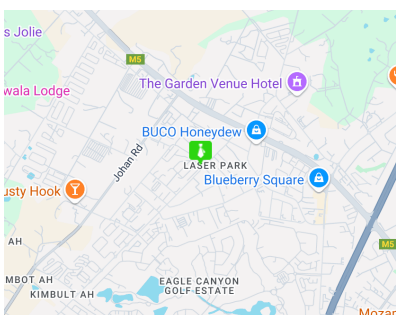
Security Yes
Open Parking Bays 10

Sizes

Floor Size 902m²

Extras

24 Hour Access 24 Hour Response



<https://www.newpointproperty.co.za>