



**Ethan Willett**  
0844752021  
ethan.w@newpointproperty.co.za

Contact Head Office

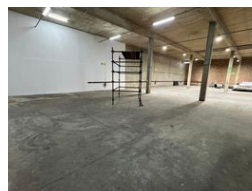
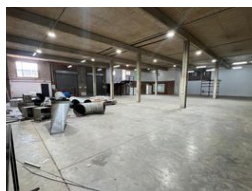
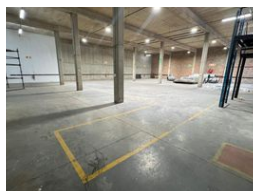
010 0354431

Office 40A  
Eden Meadows Complex  
1 Van Riebeeck Avenue  
Greenstone  
1609

941m<sup>2</sup> Warehouse To Let in Laser Park



Web Ref CL13108



R70,575 pm

Gross Monthly Rental R70,575 Excl. VAT



## Spacious 941m<sup>2</sup> Industrial Warehouse To Let in Laserpark

Positioned in a secure business park just off Beyers Naude Drive, this 941m<sup>2</sup> warehouse in Laserpark, Roodepoort, is available immediately at R70,575 plus VAT and utilities. The unit features two large on-grade roller shutter doors, generous floor space, and excellent roof height—perfect for logistics, manufacturing, or storage operations. The location offers easy access to key transport routes, making it ideal for efficient business movement.

This facility also includes ample office space across two levels, four toilets, two showers, and two kitchenettes to ensure convenience for staff. With 3-phase power and 24/7 security in a well-maintained industrial estate, this warehouse is a secure and

## Features

**Zoning** Industrial

### Interior

Floor Loading Cap.	3 Tn/m <sup>2</sup>
Air Conditioning	Yes
Power 3 Phase	Yes
Power Amps	100

### Exterior

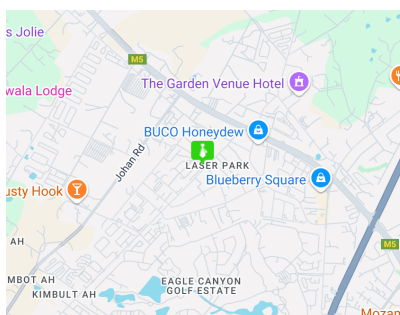
Security	Yes
----------	-----

### Sizes

Floor Size	941m <sup>2</sup>
------------	-------------------

### Extras

24 Hour Access 24 Hour Response



<https://www.newpointproperty.co.za>