

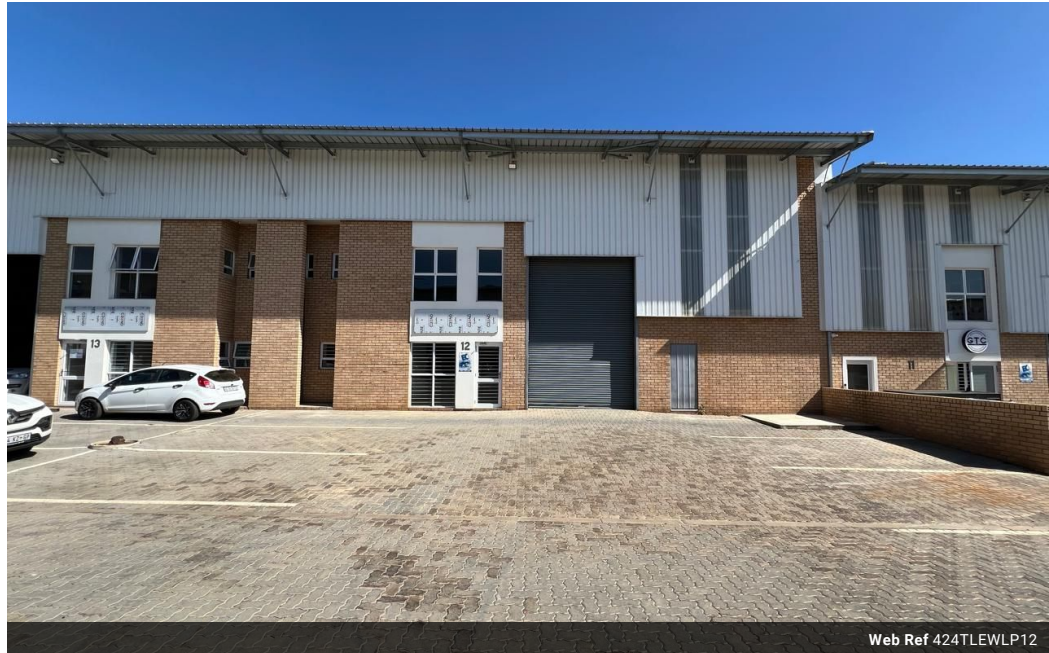


Ethan Willett
0844752021
ethan.w@newpointproperty.co.za

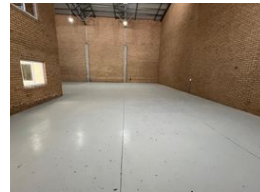
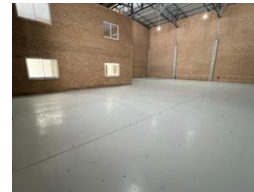
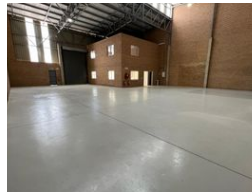
Contact Head Office
010 0354431

Office 40A
Eden Meadows Complex
1 Van Riebeeck Avenue
Greenstone
1609

424m² Warehouse To Let in Laser Park



Web Ref 424TLEWLP12



R28,832 pm

Gross Monthly Rental R28,832 Excl. VAT
Monthly Rates R1 Excl. VAT

Monthly Levy R1 Excl. VAT

0 6

Industrial property to Rent in Laserpark, Roodepoort

This 424sqm industrial warehouse is available for immediate rental at R28 832 per month, excluding VAT. Located in a secure and well-maintained business park in Laserpark, Roodepoort, the property offers excellent accessibility, positioned just off the main road, Beyers Naude Drive. The business park ensures a safe and professional working environment, ideal for logistics, light manufacturing, or storage operations.

The warehouse features a clean and functional layout with a tall roof that allows for ample vertical storage or equipment space. The open floor design enhances workflow efficiency and adaptability to various industrial needs. It is equipped with a reliable 3-phase power supply, two dedicated office spaces, three bathrooms, and a neat kitchenette—catering well to both administrative

Features

Zoning Industrial

Interior

Floor Loading Cap. 3 Tn/m²
Power 3 Phase Yes
Power Amps 100

Exterior

Security Yes
Open Parking Bays 6

Sizes

Floor Size 424m²

Extras

24 Hour Response

