



Ethan Willett  
0844752021  
ethan.w@newpointproperty.co.za

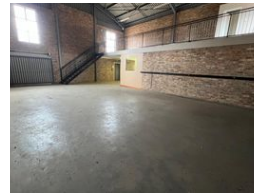
Contact Head Office  
010 0354431

Office 40A  
Eden Meadows Complex  
1 Van Riebeeck Avenue  
Greenstone  
1609

191m<sup>2</sup> Warehouse To Let in Laser Park



Web Ref EWLPTL1918



R16,255 pm

Gross Monthly Rental R16,255 Excl. VAT Monthly Rates R1 Excl. VAT

0 3

## Industrial property to Rent in Laserpark, Roodepoort

This 191sqm industrial warehouse is available to rent for R16,255 plus VAT and is ideally located in a clean, well-maintained, and securely fenced business park in Laserpark, Roodepoort. The unit features a well-proportioned warehouse floor area with excellent roof height, making it suitable for storage, light manufacturing, or distribution. Its setting within a safely secured industrial park offers a professional and reliable environment for businesses looking to operate in a prime industrial node.

The unit includes a neat reception area, two bathrooms, and is equipped with a 3-phase power supply to accommodate machinery or industrial equipment. A valuable addition is the backup inverter system, offering uninterrupted power during outages—ensuring

## Features

**Zoning** Industrial

### Interior

Floor Loading Cap. 3 Tn/m<sup>2</sup>  
Power 3 Phase Yes  
Power Amps 60

### Exterior

Security Yes  
Open Parking Bays 3

### Sizes

Floor Size 191m<sup>2</sup>

### Extras

24 Hour Access 24 Hour Response



<https://www.newpointproperty.co.za>