



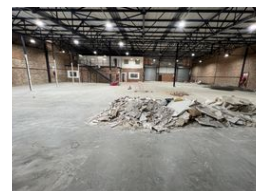
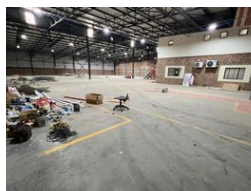
Ethan Willett
0844752021
ethan.w@newpointproperty.co.za

Contact Head Office

010 0354431

Office 40A
Eden Meadows Complex
1 Van Riebeeck Avenue
Greenstone
1609

1,513m² Warehouse To Let in Laser Park



R113,475 pm

Gross Monthly Rental R113,475 Excl. VAT
Monthly Rates R1 Excl. VAT

Monthly Levy R1 Excl. VAT

3 10

Industrial property to Rent in Laserpark, Roodepoort

This spacious 1,513sqm industrial warehouse unit is immediately available to rent at R113 475 per month, excluding VAT. Situated in a neat and securely managed business park in Laserpark, Roodepoort, the unit offers a prime location for businesses needing both warehouse and office space. The facility features high roofing, providing excellent vertical clearance for racking or machinery, and a generous open-plan warehouse floor ideal for manufacturing, storage, or logistics operations.

The unit includes ample office space both upstairs and downstairs, making it well-suited for businesses requiring administrative and operational zones within the same premises. It also offers four toilets, two kitchens for staff convenience, and a reliable 3-

Features

Zoning Industrial

Interior

Floor Loading Cap. 2 Tn/m²
Air Conditioning Yes
Power 3 Phase Yes
Power Amps 100

Exterior

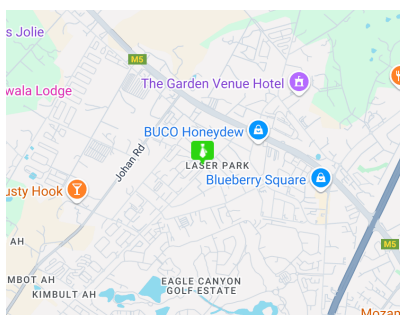
Security Yes
Covered Parking Bays 3
Open Parking Bays 10

Sizes

Floor Size 1,513m²

Extras

24 Hour Access 24 Hour Response



<https://www.newpointproperty.co.za>