



Ethan Willett
0844752021
ethan.w@newpointproperty.co.za

Contact Head Office

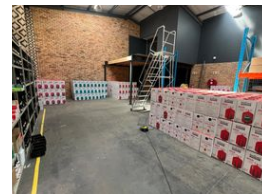
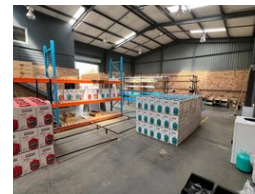
010 0354431

Office 40A
Eden Meadows Complex
1 Van Riebeeck Avenue
Greenstone
1609

467m² Warehouse To Let in Laser Park



Web Ref TL467EWLP1



R35,025 pm

Gross Monthly Rental R35,025 Excl. VAT
Monthly Rates R1 Excl. VAT

Monthly Levy R1 Excl. VAT

 2  4

Industrial property to Rent in Laserpark, Roodepoort

This 467sqm industrial warehouse is available to rent immediately at R35,025 per month (excluding VAT). Situated in a well-maintained and secure industrial park, the unit benefits from 24-hour on-site security and excellent access, located just off the main Beyers Naudé Drive in Honeydew, Roodepoort. The warehouse boasts excellent floor space with great roof height, making it ideal for a range of industrial or storage needs. It also features two on-grade roller shutter doors, ensuring ease of access for loading and deliveries.

The interior of the unit is exceptionally neat and thoughtfully designed to support both administrative and operational requirements. It includes ample office space comprising a welcoming reception area on the ground floor, a kitchenette, two

Features

Zoning Industrial

Interior

Floor Loading Cap. 3 Tn/m²
Air Conditioning Yes
Power 3 Phase Yes
Power Amps 80

Exterior

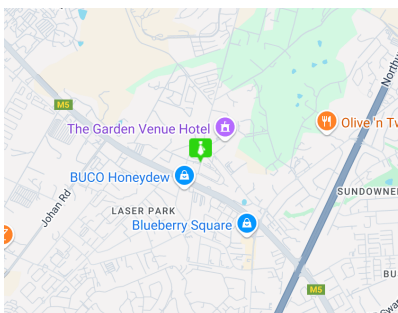
Security Yes
Covered Parking Bays 2
Open Parking Bays 4

Sizes

Floor Size 467m²

Extras

24 Hour Access 24 Hour Response Air Conditioner Alarm System



<https://www.newpointproperty.co.za>