



Ethan Willett
0844752021
ethan.w@newpointproperty.co.za

Contact Head Office

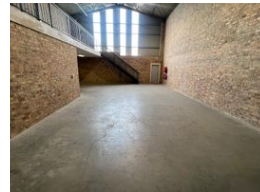
010 0354431

Office 40A
Eden Meadows Complex
1 Van Riebeeck Avenue
Greenstone
1609

191m² Warehouse To Let in Laser Park



Web Ref LPEWTL19111



R16,255 pm

Gross Monthly Rental R16,255 Excl. VAT
Monthly Rates R1 Excl. VAT

Monthly Levy R1 Excl. VAT



0



3

Industrial property to Rent in Laserpark, Roodepoort

This industrial warehouse, offering a total area of 191sqm, is available for immediate rental at R16 255 plus VAT and utilities. Located in a well-maintained and secure industrial park in Laserpark, Roodepoort, the property benefits from 24-hour security, providing peace of mind for tenants. The warehouse is equipped with an on-grade roller shutter door, offering easy access for loading and unloading. The spacious warehouse floor and high ceilings provide ample room for storage and operations, making it an ideal space for various industrial activities.

In addition to the excellent warehouse space, the unit features a neat and spacious mezzanine/loft, which includes a bathroom for added convenience. The front section of the warehouse includes a reception area, also with its own bathroom, making it suitable

Features

Zoning Industrial

Interior

Floor Loading Cap. 2 Tn/m²
Power 3 Phase Yes
Power Amps 60

Exterior

Security Yes
Open Parking Bays 3

Sizes

Floor Size 191m²

Extras

24 Hour Access 24 Hour Response

