



**Ethan Willett**  
 0844752021  
[ethan.w@newpointproperty.co.za](mailto:ethan.w@newpointproperty.co.za)

Contact Head Office

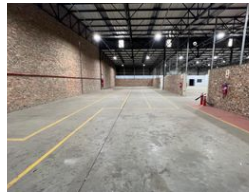
010 0354431

Office 40A  
 Eden Meadows Complex  
 1 Van Riebeeck Avenue  
 Greenstone  
 1609

1,513m<sup>2</sup> Warehouse To Let in Laser Park



Web Ref CL12772



R113,475 pm

Gross Monthly Rental R113,475 Excl. VAT



## Secure & Spacious 1,513m<sup>2</sup> Warehouse for Rent in Prime Business Park

Available immediately at R113,475/month (excl. VAT and utilities), this well-maintained 1,513m<sup>2</sup> industrial warehouse is located in a secure business park offering 24-hour on-site security. The space features two on-grade roller shutter doors, excellent roof height for stacking, and a functional layout that includes a large reception area and ample office space—ideal for businesses needing a seamless balance between operations and admin.

Designed with tenant convenience in mind, the unit offers bathrooms and kitchens on both floors, making it ideal for staff comfort and workflow. With 150 amps of three-phase power, this facility is ready for a wide range of industrial uses. Don't miss out on this

## Features

**Zoning** Industrial

### Interior

Floor Loading Cap.	10 Tn/m <sup>2</sup>
Air Conditioning	Yes
Power 3 Phase	Yes
Power Amps	150

### Exterior

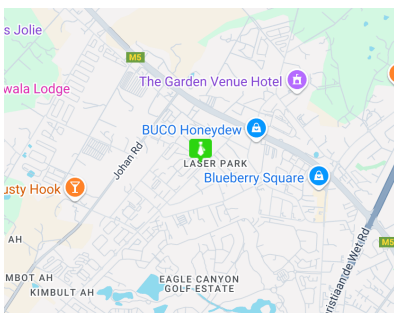
Security Yes

### Sizes

Floor Size 1,513m<sup>2</sup>

### Extras

24 Hour Access 24 Hour Response Air Conditioner



<https://www.newpointproperty.co.za>