



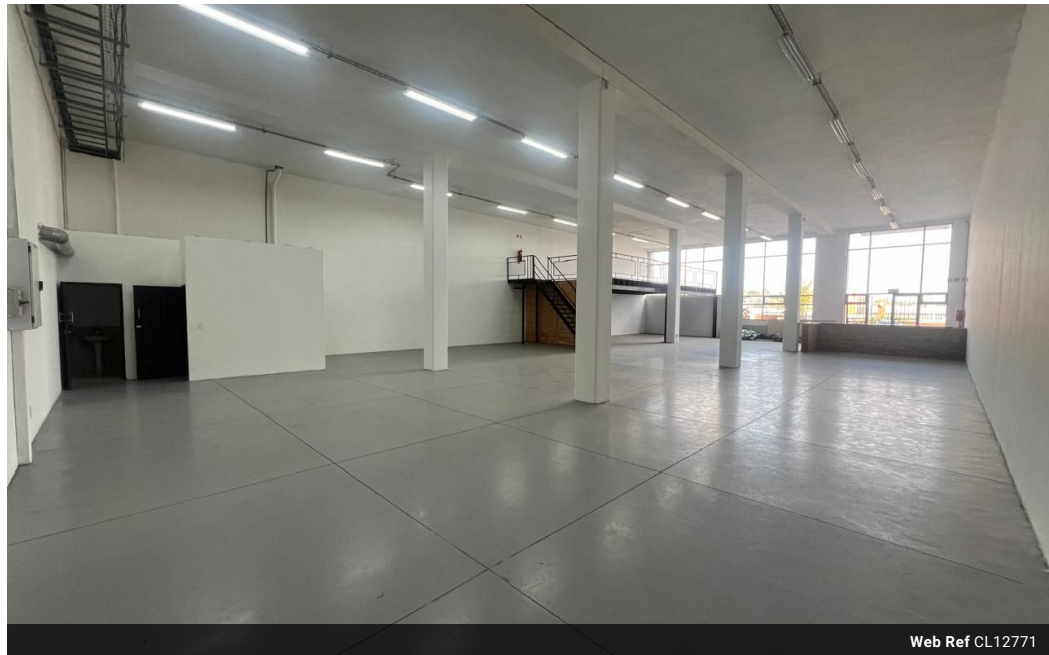
**Ethan Willett**  
 0844752021  
[ethan.w@newpointproperty.co.za](mailto:ethan.w@newpointproperty.co.za)

Contact Head Office

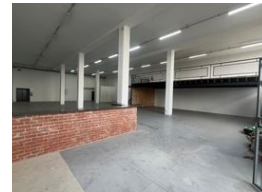
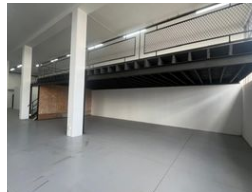
010 0354431

Office 40A  
 Eden Meadows Complex  
 1 Van Riebeeck Avenue  
 Greenstone  
 1609

492m<sup>2</sup> Warehouse To Let in Laser Park



Web Ref CL12771



R34,440 pm

Gross Monthly Rental R34,440 Excl. VAT



0



5

## Prime Retail-Ready Space in Secure Laser Park Hub

Position your brand for success with this 492m<sup>2</sup> industrial property, perfectly suited for retail use in the bustling Laser Park area. This space is located within a secure business park featuring electric fencing and daytime security, this space offers peace of mind and great visibility. The open-plan design maximizes showroom potential, creating a clean, customer-friendly layout for seamless operations.

Additional features include two bathrooms, a rear storeroom for efficient inventory management, and a mezzanine level ideal for extra display or storage space. With 60 amps of three-phase power, the property is ready to handle a variety of retail or light industrial functions. This is a fantastic opportunity to set up shop in one of Roodepoort's most dynamic commercial zones—get in

## Features

**Zoning** Industrial

### Interior

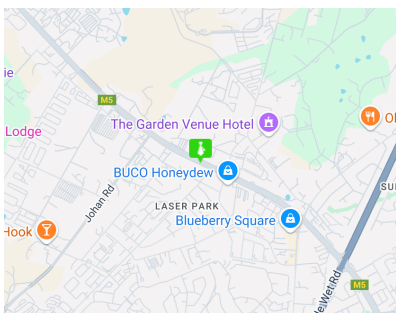
Power 3 Phase	Yes
Power Amps	60

### Exterior

Security	Yes
Open Parking Bays	5

### Sizes

Floor Size	492m <sup>2</sup>
------------	-------------------



<https://www.newpointproperty.co.za>