



Ethan Willett
0844752021
ethan.w@newpointproperty.co.za

Contact Head Office

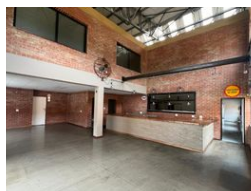
010 0354431

Office 40A
Eden Meadows Complex
1 Van Riebeeck Avenue
Greenstone
1609

500m² Warehouse To Let in Laser Park



Web Ref CL10737



R32,500 pm

Gross Monthly Rental R32,500 Excl. VAT



0



4

500sqm Industrial property in Laserpark, Roodepoort

Discover an exceptional industrial opportunity in Laserpark, Roodepoort, with 500sqm of prime space available in a secure business park. This well-maintained property features a fully-equipped food preparation kitchen, complete with a cold room, kitchen facilities, and an efficient extraction system. Its adaptability stands out; the food preparation equipment can be easily removed to accommodate a variety of business needs.

Situated within a secure business park, this 500sqm property in Laserpark, Roodepoort, is an enticing option for diverse business ventures. The fully-equipped kitchen, including a cold room and extraction system, adds to its versatility. The standout feature is its adaptability, allowing for easy removal of kitchen equipment to suit changing business requirements. Ideal for culinary

Features

Building Name Zoning

Unit 11 Harbour Park
Industrial

Interior

Power 3 Phase Yes

Exterior

Security Yes
Open Parking Bays 4

Sizes

Floor Size 500m²
Land Size 500m²



<https://www.newpointproperty.co.za>