

Ryan Van Rensburg

0846482022

ryan@newpointproperty.co.za

Contact Head Office

010 0354431

Office 40A

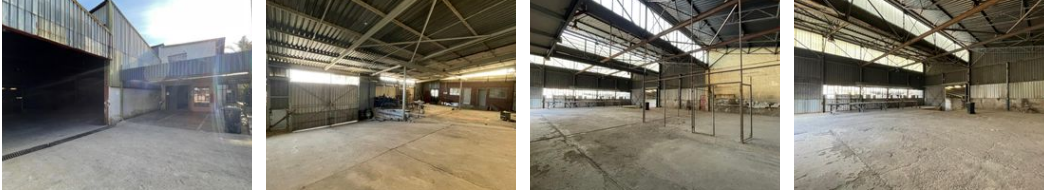
Eden Meadows Complex

1 Van Riebeeck Avenue

Greenstone



1609

1,400m² Warehouse To Let in Industria North



R42,000 pm

Gross Monthly Rental R42,000 Excl. VAT

 2  6

Versatile 1,400m² Warehouse with Dual Access in Industria North

Position your business for growth in this 1,400m² industrial warehouse, ideally located in the established Industria North, Roodepoort. With ample floor space, three-phase power, and integrated office areas, this facility is tailored for large-scale manufacturing, storage, or distribution. The functional layout ensures smooth operational flow, while on-site staff amenities enhance daily workplace comfort.

The property boasts dual access points from Richard Road and Banfield Road, allowing for efficient logistics and easy truck movement. Designated parking bays are available for staff and visitors, and the strategic location offers excellent connectivity to key transport routes. Don't miss this opportunity to secure a well-equipped, accessible industrial facility—contact us today to

Features

Zoning		Industrial			
Interior		Exterior		Sizes	
Power 3 Phase	Yes	Covered Parking Bays	2	Floor Size	1,400m²
Power Amps	220	Open Parking Bays	6	Land Size	1,400m²

