



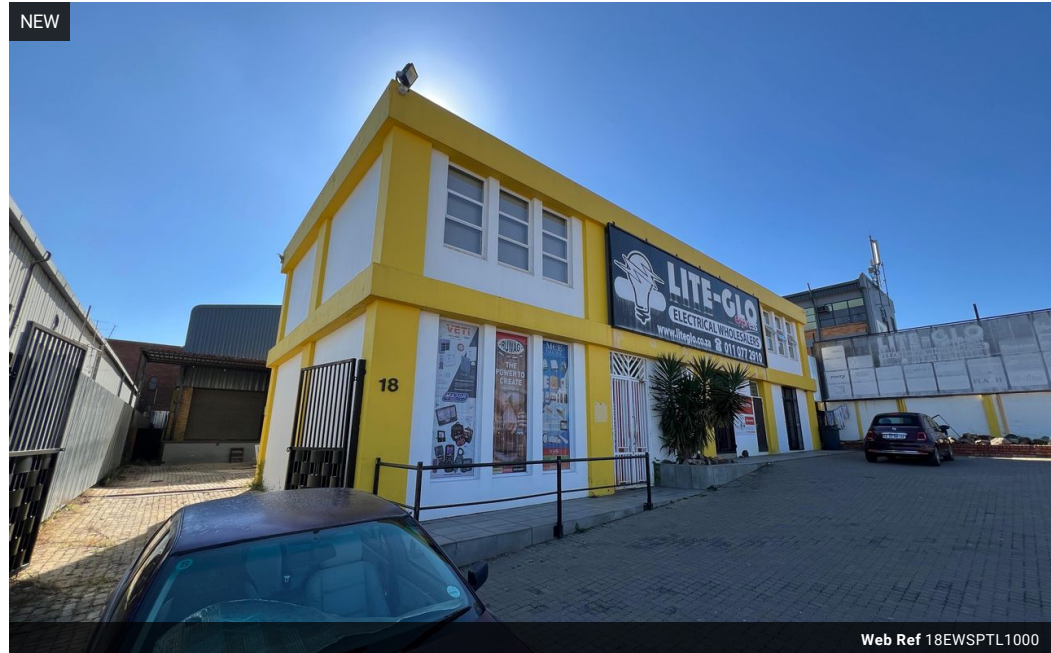
Ethan Willett
0844752021
ethan.w@newpointproperty.co.za

Contact Head Office

010 0354431

Office 40A
Eden Meadows Complex
1 Van Riebeeck Avenue
Greenstone
1609

1,000m² Warehouse To Let in Strijdompark



Web Ref 18EWSPTL1000



R60,000 pm

Gross Monthly Rental R60,000 Excl. VAT
Monthly Rates R1 Excl. VAT

Monthly Levy R1 Excl. VAT



0



10

Industrial Property to Rent in Strijdompark, Randburg

This free-standing 1,000sqm industrial warehouse is available immediately for rent at R60,000 per month (excluding VAT) or for purchase at R6,000,000 (excluding VAT). Ideally positioned just off Malibongwe Drive in Strijdompark, Randburg, the property offers excellent accessibility and visibility for both industrial operations and potential retail use. The warehouse features a spacious and versatile layout, equipped with two roller shutter doors, great internal roof height, and a 3-phase power supply—making it suitable for a range of light industrial or commercial applications.

A key highlight of this property is its retail-friendly frontage, which allows for walk-in trade or showroom potential. Inside, the

Features

Zoning Industrial

Interior

Floor Loading Cap. 3 Tn/m²
Power 3 Phase Yes
Power Amps 100

Exterior

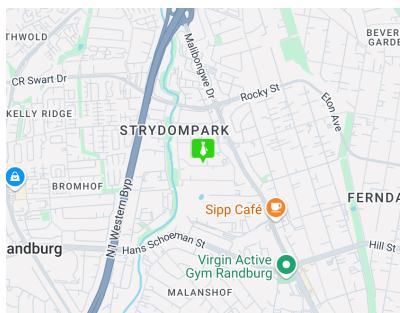
Open Parking Bays 10

Sizes

Floor Size 1,000m²

Extras

24 Hour Access 24 Hour Response



<https://www.newpointproperty.co.za>