



Ethan Willett  
0844752021  
ethan.w@newpointproperty.co.za

Contact Head Office

010 0354431

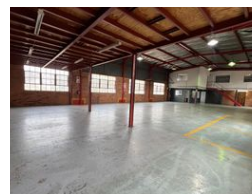
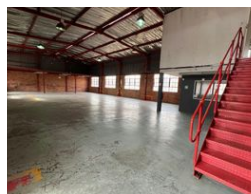
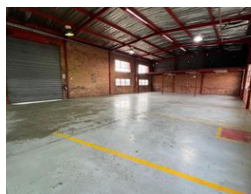
Office 40A  
Eden Meadows Complex  
1 Van Riebeeck Avenue  
Greenstone  
1609

463m<sup>2</sup> Warehouse To Let in Strijdompark

NEW



Web Ref 463EWTLSP1



R37,000 pm

Gross Monthly Rental R37,000 Excl. VAT  
Monthly Rates R1 Excl. VAT

Monthly Levy R1 Excl. VAT



0



10

## Industrial Property to Rent in Strijdompark, Randburg

This spacious industrial warehouse unit measuring 463sqm is now available to rent immediately at R37,000 per month (plus VAT). Located in the secure and well-maintained Strijdompark Business Park in Randburg, the property offers excellent accessibility and 24-hour on-site security for peace of mind. The unit is ideal for a variety of industrial or distribution operations, featuring a high roof for vertical storage efficiency, generous open warehouse floor space, and a convenient on-grade roller shutter door for easy loading and offloading.

In addition to the functional warehouse area, the unit boasts ample office space complete with a neat reception area, a kitchenette, and two bathrooms – one of which is equipped with a shower. This unit is also powered by a robust 3-phase power supply, making

## Features

**Zoning** Industrial

### Interior

Floor Loading Cap. 2 Tn/m<sup>2</sup>  
Power 3 Phase Yes  
Power Amps 100

### Exterior

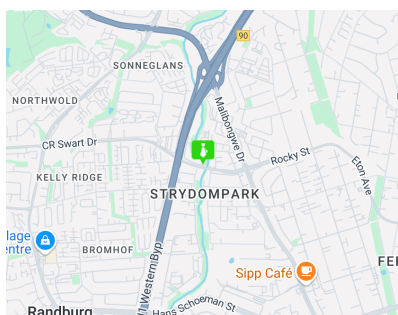
Security Yes  
Open Parking Bays 10

### Sizes

Floor Size 463m<sup>2</sup>

### Extras

24 Hour Access 24 Hour Response



<https://www.newpointproperty.co.za>