



Ethan Willett  
0844752021  
ethan.w@newpointproperty.co.za

Contact Head Office

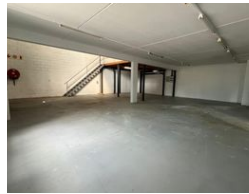
010 0354431

Office 40A  
Eden Meadows Complex  
1 Van Riebeeck Avenue  
Greenstone  
1609

344m<sup>2</sup> Warehouse To Let in Strijdompark



Web Ref EWTLS344U1



R24,770 pm

Gross Monthly Rental R24,770 Excl. VAT  
Monthly Rates R1 Excl. VAT

Monthly Levy R1 Excl. VAT



## Industrial Property to Rent in Strijdompark, Randburg

This 344sqm warehouse unit is available for immediate rental at R24,770 plus VAT, located within a clean and securely maintained business park in Strijdompark, Randburg. The park offers 24-hour on-site security, providing peace of mind and a safe working environment for tenants. The unit is well-equipped with an on-grade roller shutter door for efficient loading and unloading, excellent internal roof height suitable for warehousing or light industrial operations, and a spacious, practical floor layout that supports a variety of business uses. A reliable 3-phase power supply further enhances its industrial readiness.

Inside, the unit features a professional reception area that leads into a well-appointed office section, including ample workspace

## Features

**Zoning** Industrial

### Interior

Floor Loading Cap. 3 Tn/m<sup>2</sup>  
Air Conditioning Yes  
Power 3 Phase Yes  
Power Amps 80

### Exterior

Security Yes  
Open Parking Bays 5

### Sizes

Floor Size 344m<sup>2</sup>

### Extras

24 Hour Access 24 Hour Response Fibre

