



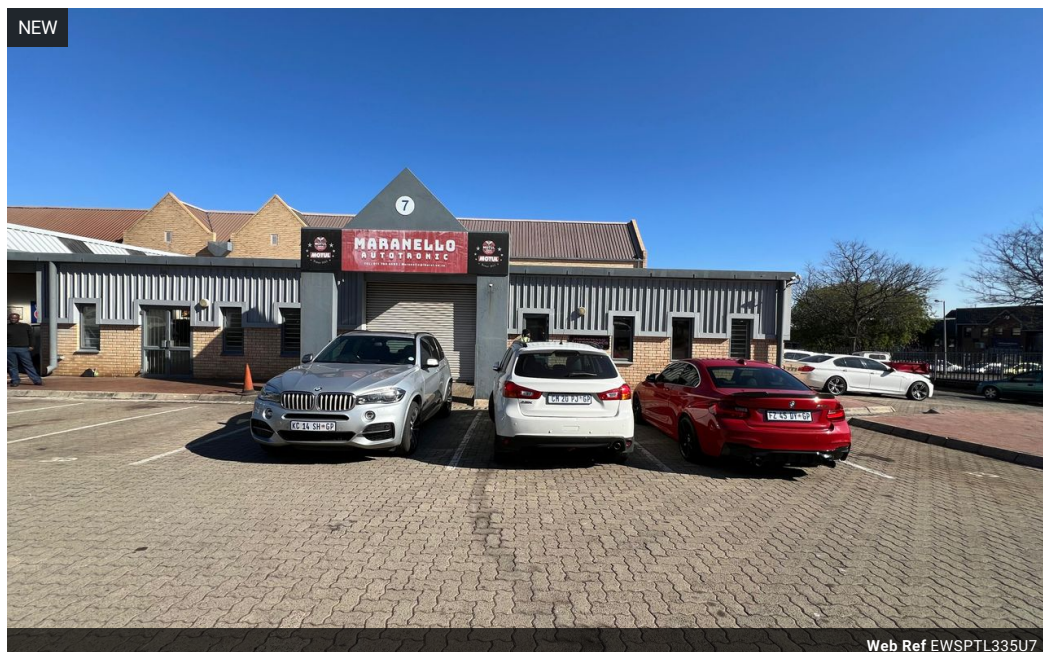
Ethan Willett
0844752021
ethan.w@newpointproperty.co.za

Contact Head Office

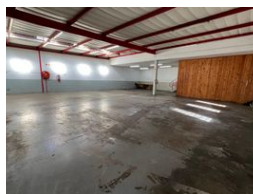
010 0354431

Office 40A
Eden Meadows Complex
1 Van Riebeeck Avenue
Greenstone
1609

335m² Warehouse To Let in Strijdompark



Web Ref EWSPTL335U7



R25,000 pm

Gross Monthly Rental R25,000 Excl. VAT
Monthly Rates R1 Excl. VAT

Monthly Levy R1 Excl. VAT



0



5

Industrial Property to Rent in Strijdompark, Randburg

This 335sqm warehouse unit is immediately available to rent at R25,000 plus VAT, offering excellent value within a clean and securely managed business park in Strijdompark, Randburg. The park features daytime security guarding, ensuring a safe and professional working environment. The unit is equipped with an on-grade roller shutter door for convenient vehicle access, generous roof height suitable for light industrial activities, and a spacious open floor area that supports efficient operational flow. A 3-phase power supply further enhances its suitability for a range of industrial applications.

Inside, the warehouse includes a neat reception area that creates a welcoming entry point for clients or visitors. Towards the back,

Features

Zoning Industrial

Interior

Floor Loading Cap. 3 Tn/m²
Power 3 Phase Yes
Power Amps 60

Exterior

Security Yes
Open Parking Bays 5

Sizes

Floor Size 335m²

Extras

24 Hour Access 24 Hour Response Fibre

