



Ethan Willett  
0844752021  
ethan.w@newpointproperty.co.za

Contact Head Office

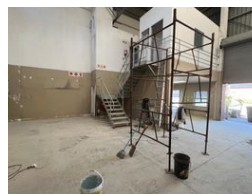
010 0354431

Office 40A  
Eden Meadows Complex  
1 Van Riebeeck Avenue  
Greenstone  
1609

156m<sup>2</sup> Warehouse To Let in Strijdompark



Web Ref EWTL156SP19



R10,920 pm

Gross Monthly Rental R10,920 Excl. VAT  
Monthly Rates R1 Excl. VAT

Monthly Levy R1 Excl. VAT

0 3

## Industrial Property to Rent in Strijdompark, Randburg

This 156sqm industrial warehouse unit is available to rent immediately at R10,920 plus VAT and is located in a clean, secure business park just off Malibongwe Drive in Strijdompark, Randburg. The unit is designed for efficiency and accessibility, featuring a generous warehouse floor area with excellent roof height, making it suitable for a range of light industrial or storage operations. An on-grade roller shutter door provides easy access for deliveries and dispatch.

The warehouse also includes two well-proportioned offices, two bathrooms, and a reliable 3-phase power supply, making it ideal for businesses that require both operational and administrative space in one convenient location. Situated within a securely

## Features

**Zoning** Industrial

### Interior

Floor Loading Cap. 2 Tn/m<sup>2</sup>  
Power 3 Phase Yes  
Power Amps 60

### Exterior

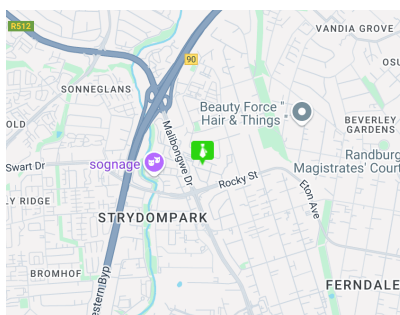
Security Yes  
Open Parking Bays 3

### Sizes

Floor Size 156m<sup>2</sup>

### Extras

24 Hour Access 24 Hour Response Fibre



<https://www.newpointproperty.co.za>