



Ethan Willett
0844752021
ethan.w@newpointproperty.co.za

Contact Head Office

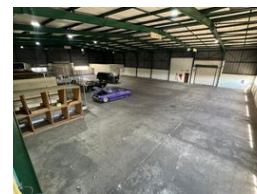
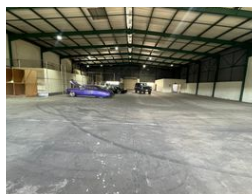
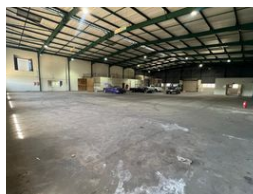
010 0354431

Office 40A
Eden Meadows Complex
1 Van Riebeeck Avenue
Greenstone
1609

1,948m² Warehouse To Let in Strijdompark



Web Ref 1948EWSPTL2



R146,100 pm

Gross Monthly Rental R146,100 Excl. VAT
Monthly Rates R1 Excl. VAT

Monthly Levy R1 Excl. VAT

0 20

Prime Industrial Property to Rent in Strijdompark, Randburg

This free-standing industrial property in Strijdompark, Randburg, offers an excellent opportunity for businesses seeking a versatile and well-located warehouse facility. Spanning 1,948sqm, the property is immediately available to rent at R146,100 plus VAT. It boasts exceptional exposure from the N1 highway, ensuring high visibility for passing traffic. The layout is uniquely designed to support a range of industrial or distribution operations, featuring three roller shutter doors for easy loading and unloading, a spacious warehouse area with impressive roof height, and a large yard with 20 dedicated parking bays for staff and visitors.

Inside, the property includes ample office space split across two floors, complete with male and female bathrooms and

Features

Zoning Industrial

Interior

Floor Loading Cap. 3 Tn/m²
Air Conditioning Yes
Power 3 Phase Yes
Power Amps 150

Exterior

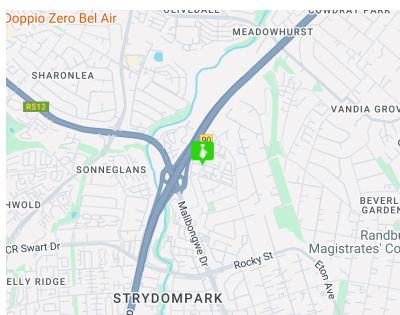
Open Parking Bays 20

Sizes

Floor Size 1,948m²

Extras

24 Hour Access 24 Hour Response Fibre Air Conditioning Unit



<https://www.newpointproperty.co.za>