



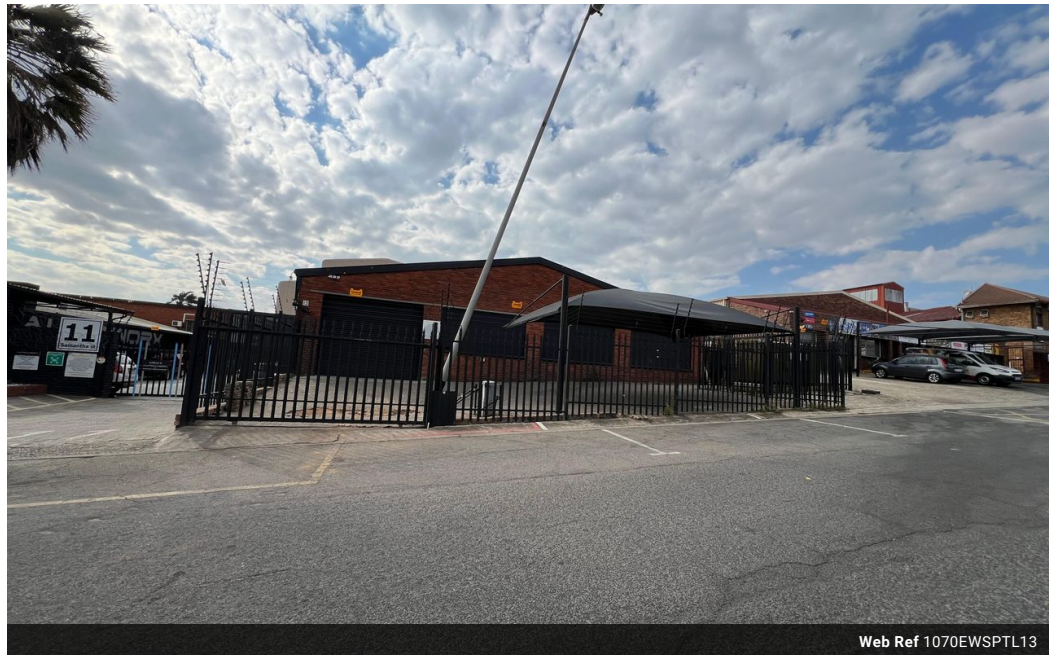
Ethan Willett
0844752021
ethan.w@newpointproperty.co.za

Contact Head Office

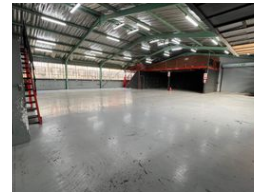
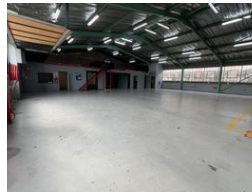
010 0354431

Office 40A
Eden Meadows Complex
1 Van Riebeeck Avenue
Greenstone
1609

1,070m² Warehouse To Let in Strijdompark



Web Ref 1070EWSPTL13



R60,000 pm

Gross Monthly Rental R60,000 Excl. VAT
Monthly Rates R1 Excl. VAT
Monthly Levy R1 Excl. VAT

0 10

Free-Stabding Industrial Property to Rent in Strijdompark, Randburg

This free-standing industrial property offers 1,070sqm under roof and is immediately available to rent at R60,000 per month, excluding VAT. Ideally located just off Malibongwe Drive in the sought-after industrial node of Strijdompark, Randburg, the property provides excellent accessibility for logistics and transport, with two large roller shutter doors and elevated loading areas suited for truck access and efficient goods handling. The warehouse itself is neat, spacious, and boasts high roofing, making it ideal for racking, stacking, or other height-dependent operations.

The premises also feature substantial office space positioned at the rear of the property, offering a quiet and functional area for administration and management teams. With four bathrooms, two generous mezzanine levels, and a reliable 3-phase power

Features

Zoning Industrial

Interior

Floor Loading Cap. 3 Tn/m²
Power 3 Phase Yes
Power Amps 100

Exterior

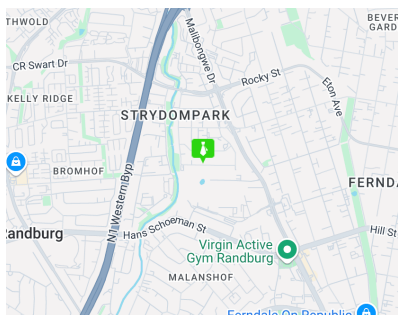
Open Parking Bays 10

Sizes

Floor Size 1,070m²

Extras

24 Hour Access 24 Hour Response Fibre



<https://www.newpointproperty.co.za>