



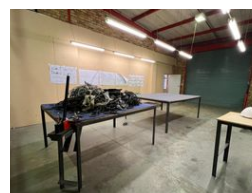
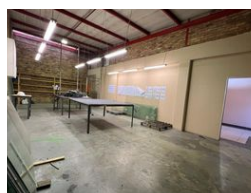
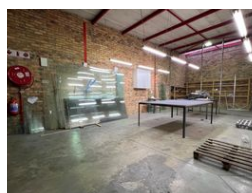
Ethan Willett  
0844752021  
ethan.w@newpointproperty.co.za

Contact Head Office

010 0354431

Office 40A  
Eden Meadows Complex  
1 Van Riebeeck Avenue  
Greenstone  
1609

203m<sup>2</sup> Warehouse To Let in Strijdompark



R16,838 pm

**Gross Monthly Rental** R16,838 Excl. VAT  
**Monthly Rates** R1 Excl. VAT

**Monthly Levy** R1 Excl. VAT

0 3

## Industrial Property to Rent in Strijdompark, Randburg

This 203sqm industrial warehouse unit, located in the well-established Strijdompark area of Randburg, is immediately available to rent at R16 838 per month, excluding VAT. Situated within a neat and securely managed business park offering 24-hour security, this unit provides a safe and professional working environment. The warehouse is equipped with an on-grade roller shutter door, providing easy access for deliveries and collections, as well as good roof height and ample open floor space ideal for storage, light manufacturing, or distribution operations.

The interior layout includes a welcoming, tidy reception area at the front entrance, two bathrooms, and a convenient kitchenette for staff use. Upstairs, there is generous office space perfectly suited for administrative operations or management teams. The unit is

## Features

**Zoning** Industrial

### Interior

Floor Loading Cap. 2 Tn/m<sup>2</sup>  
Air Conditioning Yes  
Power 3 Phase Yes  
Power Amps 80

### Exterior

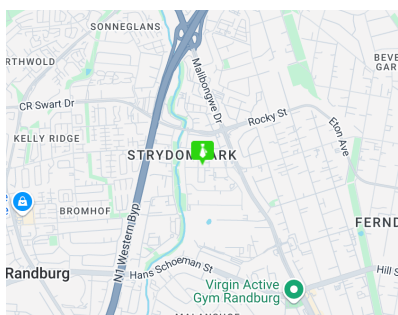
Security Yes  
Open Parking Bays 3

### Sizes

Floor Size 203m<sup>2</sup>

### Extras

24 Hour Access 24 Hour Response Fibre



<https://www.newpointproperty.co.za>