



Ethan Willett
0844752021
ethan.w@newpointproperty.co.za

Contact Head Office

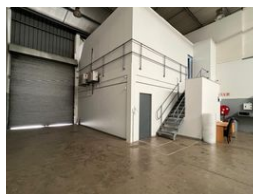
010 0354431

Office 40A
Eden Meadows Complex
1 Van Riebeeck Avenue
Greenstone
1609

274m² Warehouse To Let in Strijdompark



Web Ref 274EWSPTL15



R19,180 pm

Gross Monthly Rental R19,180 Excl. VAT
Monthly Rates R1 Excl. VAT

Monthly Levy R1 Excl. VAT



0



6

Industrial Property to Rent in Strijdompark, Randburg

This 274sqm industrial warehouse unit is immediately available to rent at R19,180 per month (excluding VAT). Positioned within a clean and securely managed business park in Strijdompark, Randburg, the unit benefits from excellent accessibility just off the main arterial route, Malibongwe Drive. The warehouse features an on-grade roller shutter door for convenient access, generous floor space, and impressive roof height—ideal for storage, light manufacturing, or distribution purposes.

Inside, the unit includes a neat and spacious reception area, three well-proportioned offices, two bathrooms, and an additional shower, catering to both operational and staff comfort needs. The inclusion of a 3-phase power supply supports a range of

Features

Zoning Industrial

Interior

Floor Loading Cap.	3 Tn/m ²
Air Conditioning	Yes
Power 3 Phase	Yes
Power Amps	60

Exterior

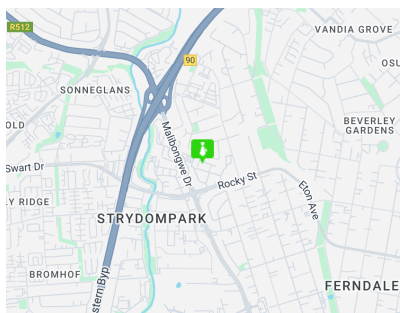
Security	Yes
Open Parking Bays	6

Sizes

Floor Size	274m ²
------------	-------------------

Extras

24 Hour Access 24 Hour Response Fibre



<https://www.newpointproperty.co.za>