



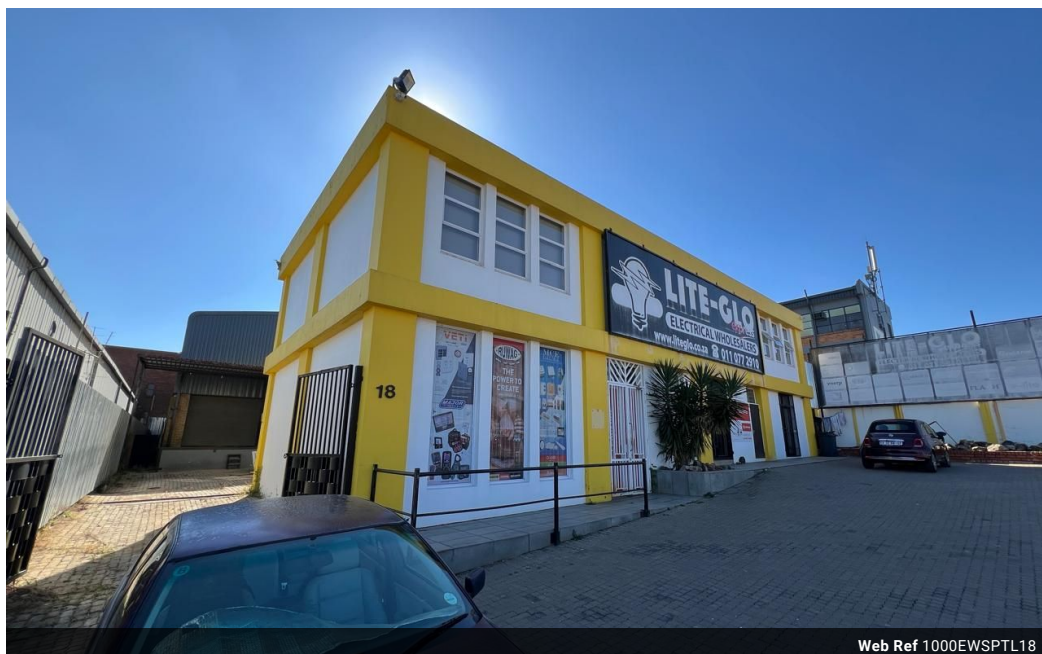
Ethan Willett
0844752021
ethan.w@newpointproperty.co.za

Contact Head Office

010 0354431

Office 40A
Eden Meadows Complex
1 Van Riebeeck Avenue
Greenstone
1609

1,000m² Warehouse To Let in Strijdompark



Web Ref 1000EWSPTL18



R60,000 pm

Gross Monthly Rental R60,000 Excl. VAT
Monthly Rates R1 Excl. VAT

Monthly Levy R1 Excl. VAT



0



10

Industrial Property to Rent in Strijdompark, Randburg

This 1,000sqm free-standing industrial warehouse is now available to rent immediately at R60,000 per month (excluding VAT). Ideally located just off Malibongwe Drive in the sought-after industrial hub of Strijdompark, Randburg, the property offers excellent accessibility and visibility. It features two roller shutter doors for efficient loading and offloading, generous warehouse floor space, and impressive roof height—making it suitable for a variety of industrial operations such as storage, manufacturing, or logistics.

A key highlight of this property is its retail section at the front, offering valuable road frontage and exposure for customer-facing businesses or showroom use. The upper floor comprises ample office space, complete with bathrooms and a kitchenette,

Features

Zoning Industrial

Interior

Floor Loading Cap. 2 Tn/m²
Power 3 Phase Yes
Power Amps 100

Exterior

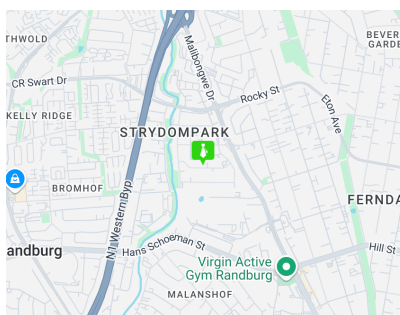
Open Parking Bays 10

Sizes

Floor Size 1,000m²

Extras

24 Hour Access 24 Hour Response Fibre



<https://www.newpointproperty.co.za>