



Ethan Willett
0844752021
ethan.w@newpointproperty.co.za

Contact Head Office

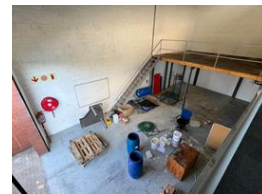
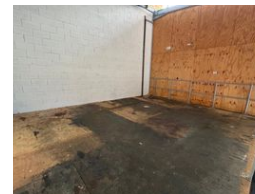
010 0354431

Office 40A
Eden Meadows Complex
1 Van Riebeeck Avenue
Greenstone
1609

344m² Warehouse To Let in Strijdompark



Web Ref TL344SPEW1



R25,717 pm

Gross Monthly Rental R25,717 Excl. VAT
Monthly Rates R1 Excl. VAT

Monthly Levy R1 Excl. VAT

3 2

Industrial Property to Rent in Strijdompark, Randburg

This 344sqm industrial warehouse unit is now available to rent immediately at R25,717 per month (excluding VAT). Situated within a clean and securely gated business park in Strijdompark, Randburg, the property offers a unique and practical layout ideal for a range of industrial or light manufacturing operations. The warehouse itself is neat and spacious, boasting a high roof for vertical storage or racking, and a convenient on-grade roller shutter door for easy loading and offloading of goods.

The unit includes a welcoming reception area and well-maintained office space located on the upper level, providing a professional working environment separate from the warehouse floor. Additional features include a kitchenette, three bathrooms for staff and

Features

Zoning Industrial

Interior

Floor Loading Cap. 2 Tn/m²
Air Conditioning Yes
Power 3 Phase Yes
Power Amps 80

Exterior

Security Yes
Covered Parking Bays 3
Open Parking Bays 2

Sizes

Floor Size 344m²

Extras

24 Hour Access 24 Hour Response Fibre



<https://www.newpointproperty.co.za>