



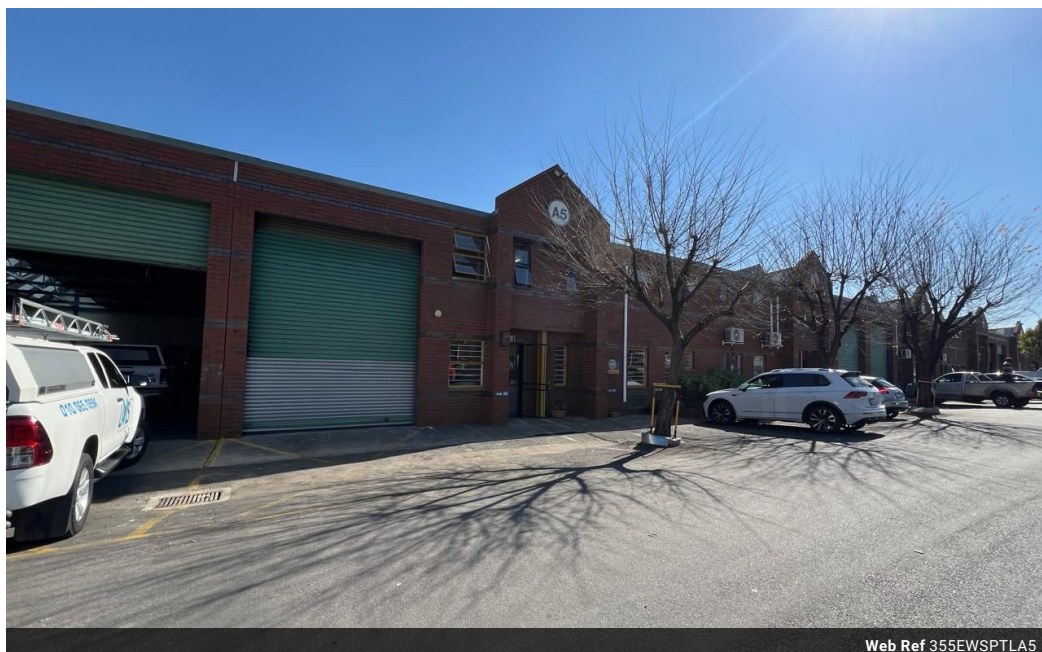
Ethan Willett  
0844752021  
ethan.w@newpointproperty.co.za

Contact Head Office

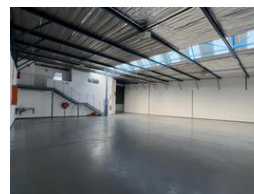
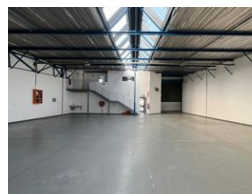
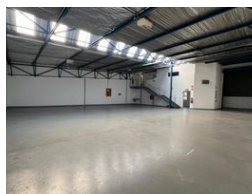
010 0354431

Office 40A  
Eden Meadows Complex  
1 Van Riebeeck Avenue  
Greenstone  
1609

355m<sup>2</sup> Warehouse To Let in Strijdompark



Web Ref 355EWSPTLA5



R24,850 pm

Gross Monthly Rental R24,850 Excl. VAT  
Monthly Rates R1 Excl. VAT

Monthly Levy R1 Excl. VAT



## Industrial Property to Rent in Strijdompark, Randburg

This 355sqm industrial warehouse unit is now available to rent immediately at R24,850 per month (excluding VAT). Situated within a neat and secure business park in Strijdompark, Randburg, the unit offers excellent access just off the main road, Malibongwe Drive—making it ideal for businesses requiring convenient connectivity and visibility. The warehouse features an on-grade roller shutter door for easy loading and offloading, generous roof height for storage or equipment, and ample open floor space suited to a variety of operational needs.

Inside, the property includes a tidy reception area and office space, providing a professional environment for administrative work. The unit is well-equipped with two bathrooms, one of which includes a shower, offering convenience for staff. A robust 3-phase

## Features

**Zoning** Industrial

### Interior

Floor Loading Cap. 2 Tn/m<sup>2</sup>  
Power 3 Phase Yes  
Power Amps 100

### Exterior

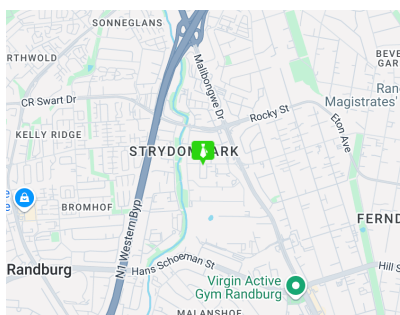
Security Yes  
Open Parking Bays 4

### Sizes

Floor Size 355m<sup>2</sup>

### Extras

24 Hour Access 24 Hour Response Fibre



<https://www.newpointproperty.co.za>